



morton.

Ashfield 708/268-270 Liverpool Road

1 1 1

Stunning new development in prime inner west location. Situated in the heart of Ashfield, this property combined sophisticated urban living with superb finishes, stylish and functional design.

- Designed by award winning architects 'Marchese Partners'
- Large designer bedroom including built-in wardrobe
- Open plan living/dining area with oak timber floor boards
- High quality finishes with carpet bedroom floors
- Multi-purpose room/study
- High quality reconstituted stone kitchen bench top
- Gas cooking and dishwasher
- Modern bathroom and internal laundry
- Ducted air conditioning throughout
- Secure car space

View

As advertised or by appointment

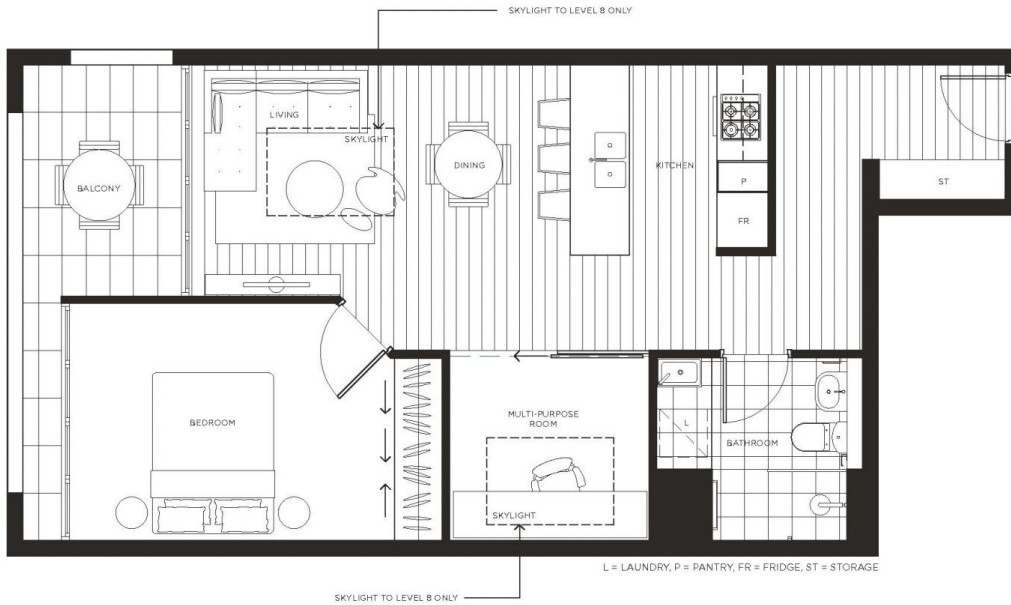
Agent

Morton RE

rentals@morton.com.au

morton.com.au

INTERNAL SQM	57
EXTERNAL SQM	7
TOTAL SQM	64



NORTH

