



morton.

Little Bay 13/1 Flemming Street

 2  1  1

Be the first to live in the transformed Prince Henry redevelopment at Little Bay, located opposite peaceful parklands and neighboring bushlands. Only a few minute's walk from Little Bay beach is Coastal Quarter, this distinctive building stylishly brings together the rich art-deco designs and classic elegance of the past with contemporary new spaces and stunning timeless finishes.

- Wool carpet in bedroom and tiles in dining and kitchen areas
- Generous balcony ideal for entertaining or taking in the view
- Kitchen features AEG appliances and stone bench tops
- Internal laundry includes Fisher & Paykel dryer and laundry tub
- Stainless Steel Electrolux fridge and washer dryer combo included

View

As advertised or by appointment

Agent

Morton RE

  rentals@morton.com.au

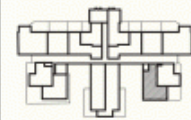
morton.com.au

COASTAL QUARTER
B-G13
PRINCE HENRY AT LITTLE BAY

Bedrooms	2
Bathrooms	1
Basement Parking	1

Internal Area	80 sqm
External Area	25 sqm

TOTAL AREA 105 sqm



Contact
(02) 9256 5908
www.princehenryatlittlebay.com.au



**A BROOKFIELD
RESIDENTIAL PROPERTY**

Disclaimer: While the information on this panel has been carefully compiled and is correct at the time of publication (August 2010), the information and illustrations are indicative only and may be subject to change. Brookfield Residential Properties, companies related to it and its agents do not warrant the accuracy of the information or illustrations and do not accept any liability for any error or discrepancy in that information. Interested parties should under take independent inquiries and investigations to satisfy themselves that any details herein are true and correct. The information and illustrations displayed on this panel will not form part of any contract of sale.