



morton.

Sydney 307/188 Day Street

🛏 2 🚿 2 🚗 1

Perched on the edge of Darling Harbour embracing city life, the luminous gold coloured façade of Radiance is a glowing brand new city landmark, developed by Sydney-based Loftex.

- Light-filled tiled open plan living/dining area with LED lighting and ample room for separate lounge and dining furnishings
- Entertainer's eat-in kitchen with CaesarStone island benchtop, ample soft-closing cupboard space, pantry and luxurious smeg appliances including gas cooktop
- Carpeted bedrooms, master with private east facing balcony and floor to ceiling windows, ensuite and mirrored built-in wardrobes, second with large floor to ceiling windows and walk-in wardrobes, study/third bedroom is tiled with built-ins and windows
- Both bathrooms include storage space and a shower head rose
- Internal laundry with Electrolux dryer and washer included
- NBN ready, ducted reverse cycle air con in each room with zone control, video intercom, lift access to the unit and secure basement parking and storage cage.

View

As advertised or by appointment

Agent

David Lipman

📞 0409 663 535

✉ rentals@morton.com.au

morton.com.au



2 BEDROOMS + STUDY

LEVEL 3

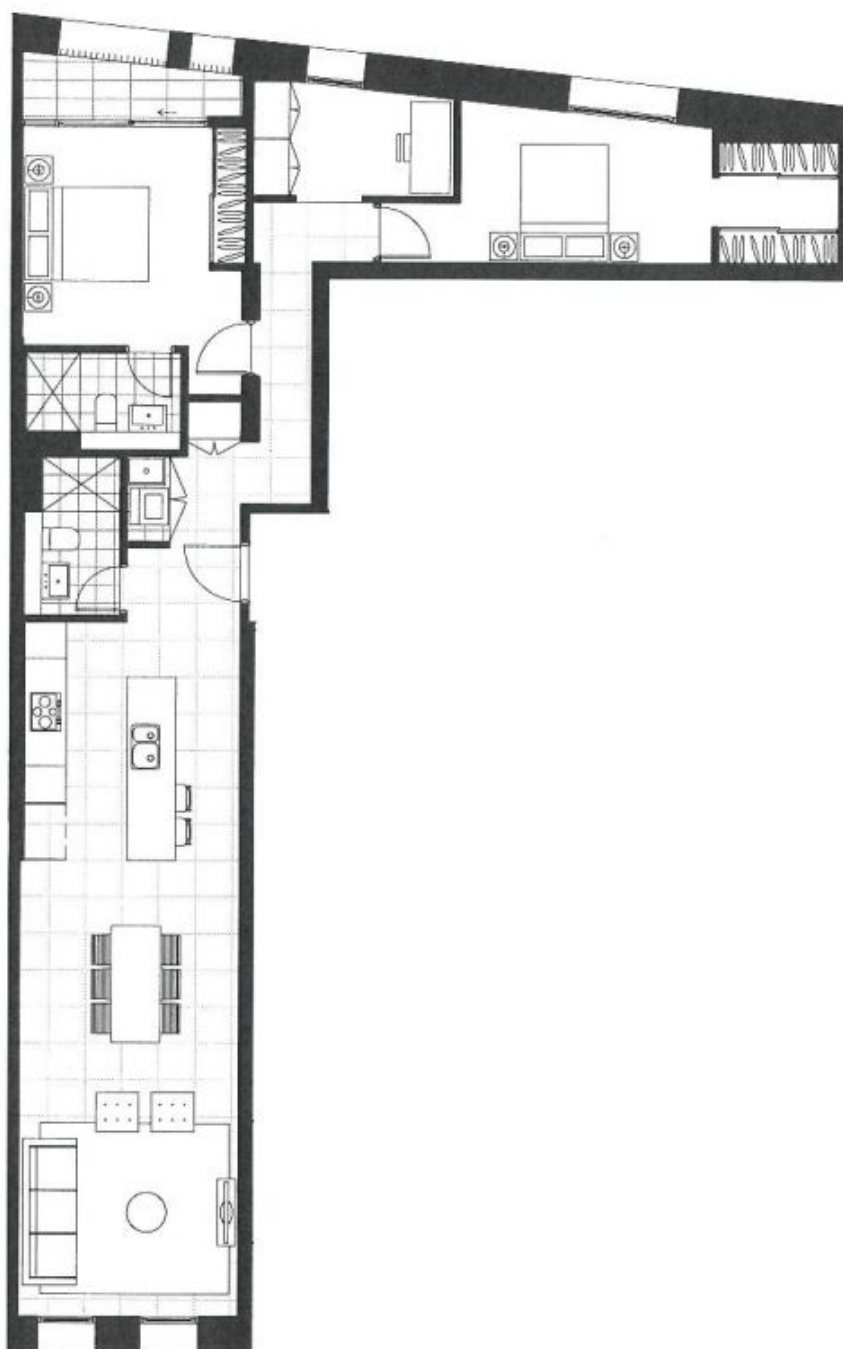
APARTMENT
307

INTERNAL
98 m²

BALCONY
3 m²TOTAL
101 m²

1800 776 105
radianceapartments.com.au

LOFTEX CBRE



Cheng and Wang also use the four-parameter preferred interconnection model to study the effects of the interconnection on the system. They find that the interconnection can be used to improve the system performance, but it also has some drawbacks. For example, the interconnection can cause the system to become more complex and more difficult to control. They also find that the interconnection can cause the system to become more sensitive to noise and disturbances. They conclude that the interconnection is a useful tool for improving the system performance, but it must be used carefully.