



# morton.

**Wentworth Point** 308/5 Stromboli Strait

2 2 1

## View

As advertised or by appointment

## Agent

**Morton RE**

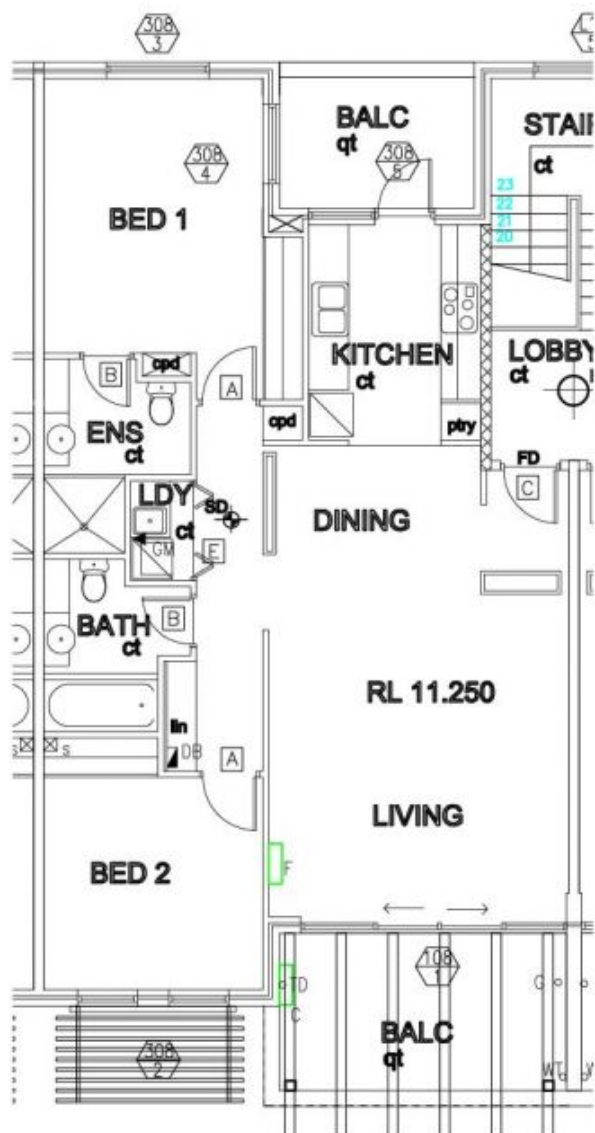
rentals@morton.com.au

The Waterfront is located moments to Sydney Olympic Park main venues, train station, Bicentennial Park and Millennium Parklands. Located in Corfu, this is your opportunity to move into this two bedroom apartment only a short stroll from The Promenade and The Piazza.

- Freshly painted and brand new carpet
- Located on level three
- Combined living and dining room
- Reverse cycle air conditioning
- Lovely kitchen with a 2nd breakfast balcony
- Full size kitchen with stainless steel appliances
- Gas cooking and lots of cupboard space
- Great size bedrooms with huge built-in wardrobes
- En-suite to main bedroom
- Laundry room and clothes dryer
- Secure undercover lock-up car space

Pulse Club membership is also available, giving you access to the local gym, in-door lap pool, outdoor lagoon pool, steam room and two tennis courts. Close to restaurants, local shops,

**morton.com.au**



0 1 2 3 4 5

"The information contained herein is intended as an introduction to the general content of the project and is subject to variation. Interested parties should rely on their own enquiries and the contract for sale. The developer reserves the right to vary from these descriptions as it deems necessary or as any relevant authority may require."



**2 BEDROOM**

**APARTMENT 308**

**TYPE C**

**INTERNAL AREA 88 sqm**

**OUTDOOR AREA 16 sqm**

**TOTAL AREA 104sqm**

**CORFU**