



# morton.

**Concord** 1/20 Burton Street

 2  2  1

This apartment is ideally located and offers the perfect home for a couple or small family. The property is situated moments to Westfield Burwood to suit all your lifestyle and shopping needs, also easy walk to Burwood train station and bus station.

North facing, this home offers a large size kitchen with plenty of cupboard space, combined living and dining area looking out to garden bed, good size bedrooms both with built in wardrobe, en-suite to main bathroom. Internal laundry room which could be used for additional storage space. Floating floors throughout and split system air conditioning.

This apartment is also positioned close to recreational parks and centrally located to all amenities.

### View

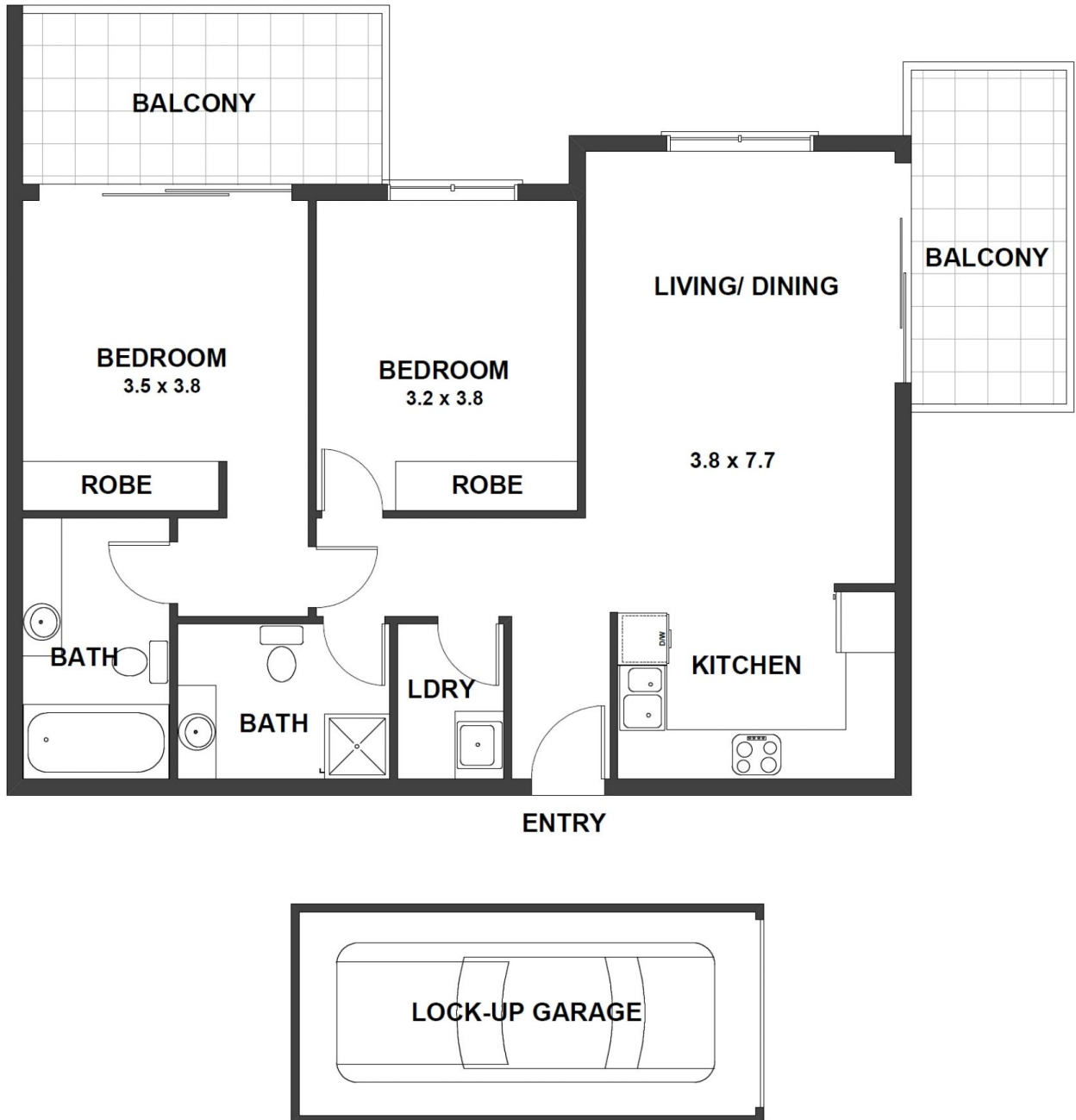
As advertised or by appointment

### Agent

**Morton RE**

 [rentals@morton.com.au](tel:)

[morton.com.au](http://morton.com.au)



## Apartment 1, 20 Burton Street, Concord

**DISCLAIMER CLAUSE** The information contained in this brochure has been furnished to us by the vendors. The plan is provided as a guide only. While we trust it to be correct, we cannot guarantee its accuracy. Sizes and areas indicated are approximate only. We have not verified whether or not that information is accurate and do not have any belief one way or another in its accuracy. We do not accept any responsibility to any person for its accuracy and do no more than pass it on. All interested parties should make and rely on their own enquiries in order to determine whether or not this information is in fact accurate.