



morton.

Wentworth Point 603/3 Stromboli Strait

 2  2  2

The Waterfront is located moments to Sydney Olympic Park main venues, train station, Bicentennial Park and Millennium Parklands. Located in Napoli, this is your opportunity to move into this two bedroom apartment only a short stroll from The Promenade and The Piazza.

- Private retreat located on level six with lift access
- Designer kitchen with plenty of cupboard space
- Stainless steel appliances and gas cooking
- Loads of natural light flowing into the separate living area
- Good size bedrooms with built-in wardrobe
- Laundry room with clothes dryer
- Two balconies allowing natural ventilation
- Split system air conditioning
- Double car space in the basement

View

As advertised or by appointment

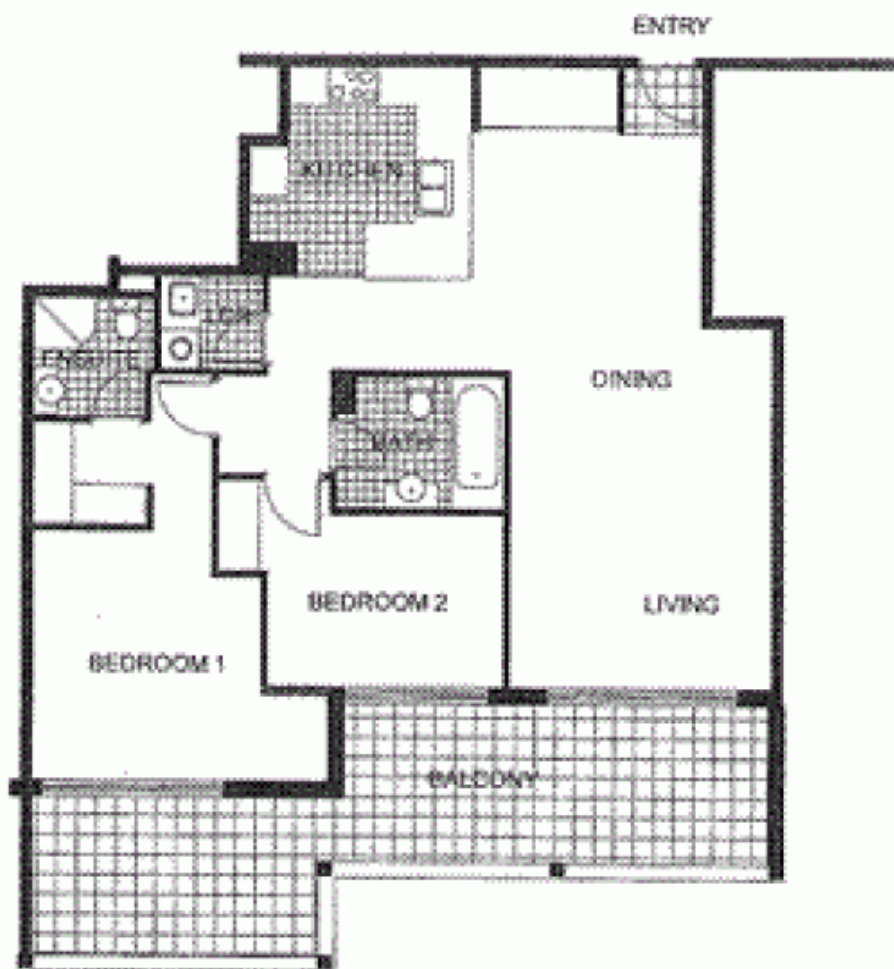
Agent

Morton RE



 rentals@morton.com.au

morton.com.au



0 1 2 3 4 5

"The information contained herein is intended as an introduction to the general content of the project and is subject to variation. Prospective parties should rely on their own inquiries and due diligence for facts. The developer reserves the right to vary from these descriptions as it deems necessary or as any official authority may require."



LEVEL 6

THE WATERFRONT

AT DEVELOPER'S RISK

2 BEDROOM

APARTMENT 603

TYPE K

INTERNAL AREA 80 sqm

OUTDOOR AREA 27 sqm

TOTAL AREA 122 sqm

NAPOLI