



morton.

Wentworth Point 315/5 Stromboli Strait

🛏 2 🚿 2 🚗 2

The Waterfront is located moments to Sydney Olympic Park main venues, train station, Bicentennial Park and Millennium Parklands. Located in Corfu at this is your opportunity to move into this two bedroom apartment only a short stroll from The Promenade and The Piazza.

- Private retreat located on level three
- Designer kitchen with plenty of cupboard space
- Stainless steel appliances and gas cooking
- Loads of natural light flowing into the living area
- Good size bedrooms with built-in wardrobe
- Laundry room with clothes dryer
- Two balconies allowing natural ventilation
- Split system air conditioning
- Tandem lock up garage.

View

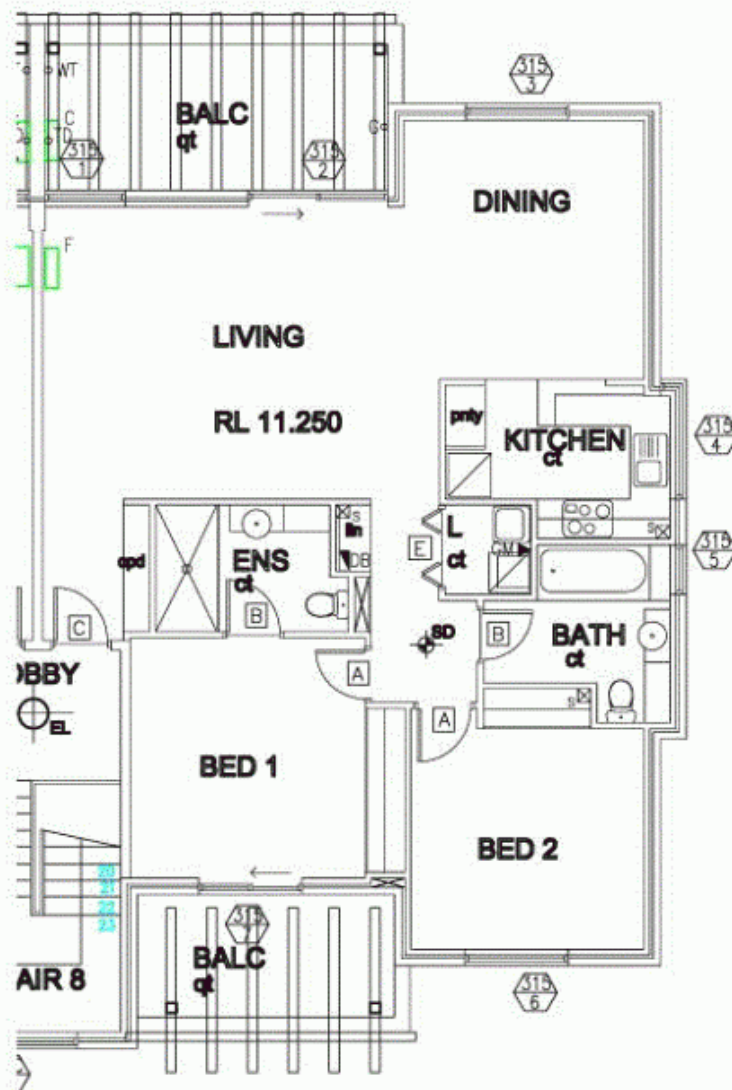
As advertised or by appointment

Agent

Morton RE

📞
✉ rentals@morton.com.au

morton.com.au



0 1 2 3 4 5

"The information contained herein is intended as an introduction to the general content of the project and is subject to variation. Interested parties should rely on their own enquiries and the contract for sale. The developer reserves the right to vary from these descriptions as it deems necessary or as any relevant authority may require."



2 BEDROOM

APARTMENT 315

TYPE F

INTERNAL AREA 96 sqm

OUTDOOR AREA 19 sqm

TOTAL AREA 115 sqm

CORFU