



morton.

Wentworth Point 402/7 Stromboli Strait

 1
  1
  1

View

As advertised or by appointment

Agent

Morton RE



 rentals@morton.com.au

The Waterfront is located moments to Sydney Olympic Park main venues, train station, Bicentennial Park and Millennium Parklands. Located in St Tropez, this is your opportunity to move into this one bedroom apartment only a short stroll from The Promenade and The Piazza.

- Located on level four
- Combined living and dining room
- Reverse cycle air conditioning
- Full size kitchen with stainless steel appliances
- Gas cooking and lots of cupboard space
- Great size bedroom with huge built-in wardrobes
- Laundry room and clothes dryer
- Secure undercover car space and storage cage
- St.Tropez building includes exclusive pool

morton.com.au

ST TROPEZ THE WATERFRONT

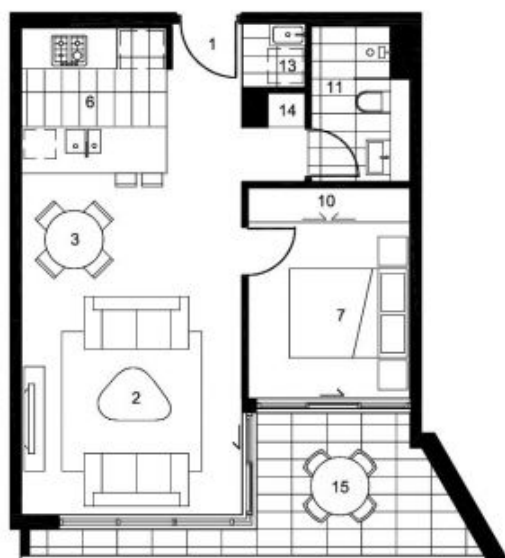
APARTMENT 2402 LEVEL 4 1 BED / 1 BATH

Internal Area 90 sqm
External Area 10 sqm
Total Area 100 sqm



KEY

- 01 Entry
- 02 Living
- 03 Dining
- 04 Study
- 05 Master
- 06 Kitchen
- 07 Bedroom 1
- 08 Bedroom 2
- 09 Bedroom 3
- 10 Wardrobe
- 11 Bathroom
- 12 Powder Room
- 13 Laundry
- 14 Store
- 15 Balcony / Courtyard



Disclaimer: The particulars are set out as a general outline for the guidance of intending purchasers and do not constitute an offer or contract. All descriptions, dimensions, references to conditions and measures permitting for use and other details are given in good faith and are believed to be correct, but any intending purchasers should not rely on them as statement or representations of fact, but must satisfy themselves by inspection or otherwise as to the correctness of such facts, and where necessary seek advice. No third party's liability or their agents' liability for any authority to make or give any representation or warranty in relation to this property. *External areas may be larger for courtyard apartments. Refer to the detailed plot in factbook.

