



804/101A Lord Sheffield Circuit Penrith, NSW



## Thornton - Brand new top floor two bedroom apartment in North Penrith

Located in the hub of North Penrith, Thornton offers convenient apartment living in a master planned community only metres from the Penrith rail hub, Westfield shopping centre and local parks.

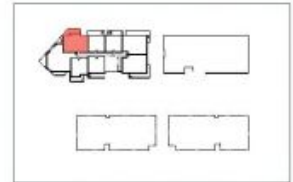
- Top floor north facing to Blue Mountains, with wrap around balcony
- Light colour scheme, Carpeted open plan living/dining
- Reverse cycle air conditioning
- Filled with natural light from the floor to ceiling windows
- Stainless steel omega appliances
- Soft close kitchen draws and cupboards
- All available with large balconies
- Large internal laundry with omega dryer
- Stone bench tops, gas cook top

**David Lipman**

0409 663 535



# Apartment A804 2 Bed



Internal	76 m <sup>2</sup>	⊗
External	14 m <sup>2</sup>	⊗
<b>Total</b>	<b>90 m<sup>2</sup></b>	



**THORNTON**  
ThorntonCentral.com.au

Disclaimer: This floor plan has been prepared for marketing purposes only. All descriptions, dimensions, depictions and other details in this floor plan (together, the "Information") may not be to scale. The vendor reserves the right to vary or amend the information without notice. The information may vary from the actual dimensions, layout and characteristics of the property as built. No third party has any authority whatsoever, either in person or in writing, to make or give any representation or warranty as to the validity of the information or the information or the property.  
Delivered: 23/02/2014 Version: 01

Developed by **St Hilliers** **PROSTON PROJECTS** | Sales by **LINKC**

804/101A Lord Sheffield Circuit Penrith, NSW