



morton.

Penrith 65a Thornton Drive

4 3 2

Welcome to the best house on the street, situated on the highly sought-after Thornton Drive. This must-see spacious and stylish brand new four bedroom unfurnished split-level house is the perfect family home. Located in the master-planned Thornton Estate in North Penrith, set on a water canal, 5 minutes' walk to Penrith train station, nearby to Westfield, wetland park, Panthers, Fire Museum, University of Western Sydney, cricket oval, schools and shops.

- Large backyard with alfresco patio and washing line , landscaped front yard
- Two bedrooms have walk-in robes, ensuite, TV points, water views. Huge king-sized master bedroom with wrap around west facing balcony. All bedrooms are carpeted with split system reverse-cycle air con units. Two bedrooms with mirrored built-in robes
- Timber floorboards throughout the ground level living and separate dining with TV/Data/Foxtel points and store room, ducted reverse-cycle air con downstairs
- Large entertainers gas kitchen with large eat-in stone

View

As advertised or by appointment

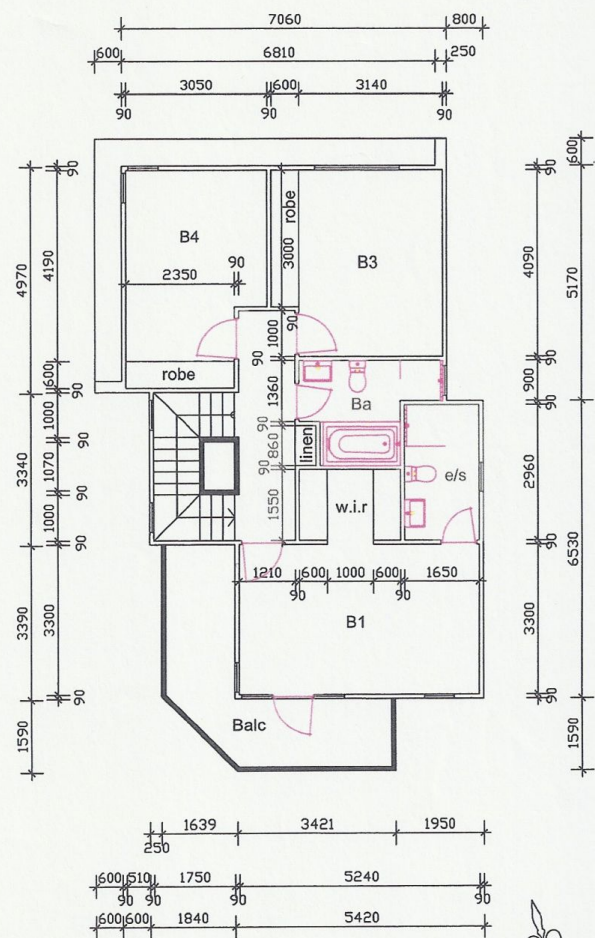
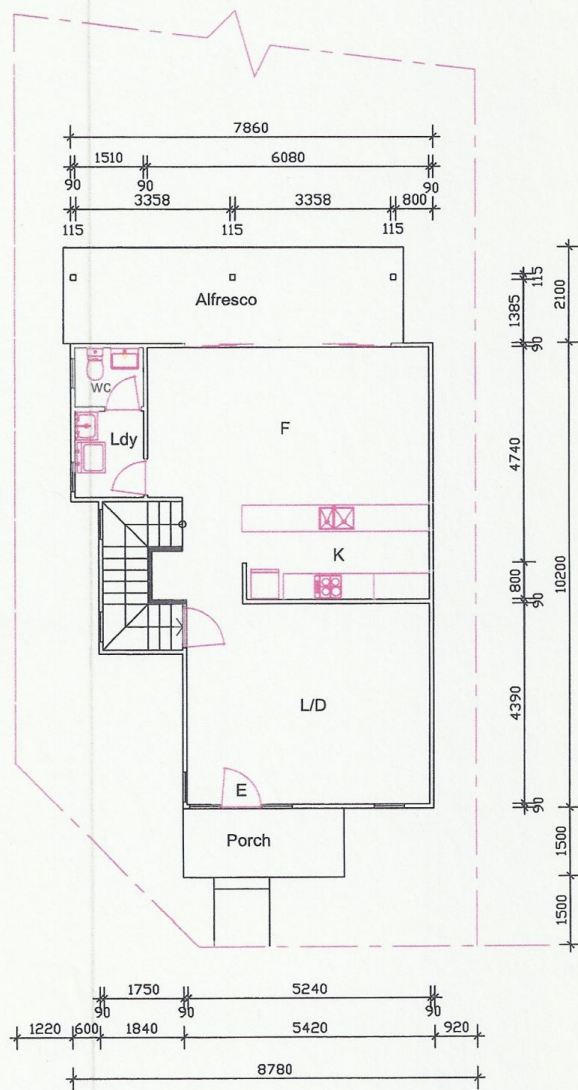
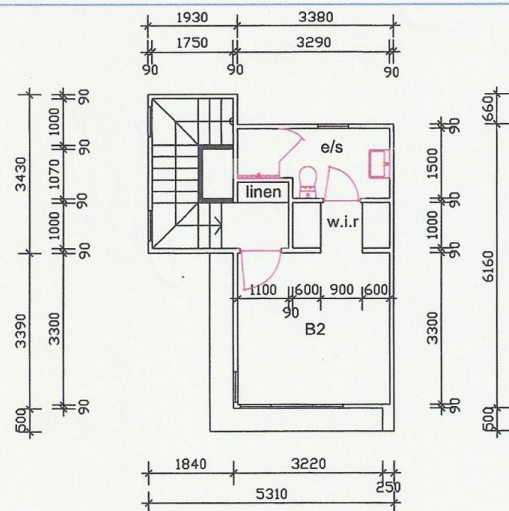
Agent

David Lipman

0409 663 535

david@morton.com.au

morton.com.au



Thatcher homes

Prepared by
THATCHER HOMES P/L
A.B.N. 97 117 258 652
109 Palmer St Woolloomooloo 2011
Ph. 9357 2641 Mob. 0411 614112

THORNTON
Release 18
Lot 108A
FLOOR PLANS

Date: 1/12/14
Scale: 1:100 @ A3
THORNTON WF108A