



morton.

Penrith 505/101C Lord Sheffield Circuit

 2
  2
  1

Deposit Received 16/2 \$460 pw. If you are landlord with a property to lease, please contact David Lipman to appraise your rental property and introduce active tenants. 0409 663 535, david@morton.com.au

Located next to Penrith train station and across the rail line to Westfield, this as new large 94sqm two bedroom unfurnished apartment in the new Thornton Central development, offers convenient living in a master-planned community only metres from all the amenities and transport you'd expect.



- Carpeted open plan living/dining (dark colour scheme) with reverse cycle air conditioning and roller blinds installed throughout
- Filled with natural light from the floor to ceiling windows
- Large north facing balcony
- Large master bedroom with walk-in robes and ensuite
- Large internal laundry with dryer and washing machine included
- Entertainers gas kitchen with CaesarStone island bench top,

View

As advertised or by appointment

Agent

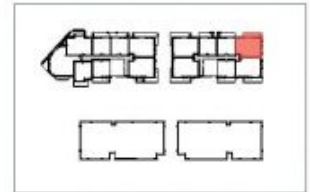
David Lipman

 0409 663 535
 david@morton.com.au

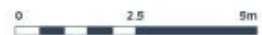
morton.com.au



Apartment C505 2 Bed



Internal	80 m ²
External	14 m ²
Total	94 m ²



THORNTON
ThorntonCentral.com.au

Disclaimer: This floor plan has been prepared for marketing purposes only. All descriptions, dimensions, depictions and other details in this floor plan together with the information may not be to scale. The vendor reserves the right to vary or amend the information without notice. The information may vary from the actual dimensions, layout and characteristics of the property as built. No third party has any authority whatsoever, either as agents or employees, to make or give any representation or warranty or to bind the vendor in connection with the information or the property.

Deletion and: 23/02/2014. Version: 01