



# morton.

**Penrith** 621/1-39 Lord Sheffield Circuit

 2  2  1

Located in the hub of North Penrith, Harts Landing apartments are brand new, unfurnished and offer contemporary urban living in a master planned vibrant community called Thornton Estate. Only metres from Penrith train station, Westfield shopping centre and local parks.

- Stylish kitchen with stone benchtops
- Soft close drawers & cupboards
- Four burner stove top with stainless steel appliances
- Including Dishwasher and Microwave
- Efficient LED lighting throughout
- Balcony, reverse cycle air conditioning
- Tiled open living and dining area
- Option of two colour schemes light and dark
- Wool-blend carpeted bedroom(s)
- Mirrored built-in robes
- Video intercom with security and lift access
- Quality bathroom/ensuite
- High speed internet & fibre to the home
- Data/TV/PayTV points in living & bedroom

### View

As advertised or by appointment

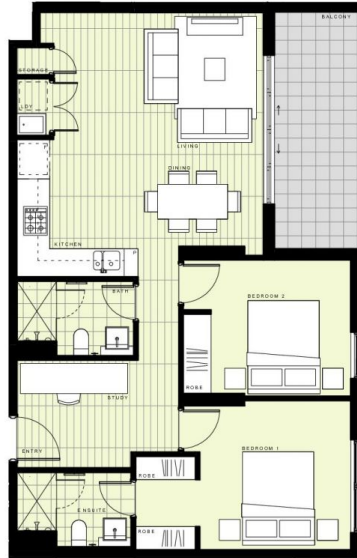
### Agent

**Morton RE**



 [rentals@morton.com.au](mailto:rentals@morton.com.au)

[morton.com.au](http://morton.com.au)



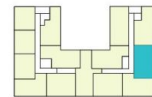
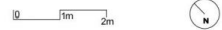
## BUILDING A

### LEVEL 6

#### APARTMENT A621 LOT 62

2 BEDROOM + STUDY

INTERNAL AREA	71m <sup>2</sup>
EXTERNAL AREA	9m <sup>2</sup>
<b>TOTAL</b>	<b>80m<sup>2</sup></b>



Disclaimer: This floor plan has been prepared for marketing purposes only. All descriptions, dimensions, depictions and other details in this floor plan may not be to scale and may vary from the property as built. Your attention is drawn to the special conditions of the contract for sale of land. No third party has any authority to make or give any representation or warranty in relation to the property unless the representation or warranty is confirmed by the vendor and included in the contract for sale of land. Revised floor plans - 14.08.18

**CALL 1300 548 588**  
**HARTSLANDING.COM.AU**  
 LORD SHEFFIELD CIRCUIT, PENRITH  
**LINK DISPLAY SUITE**  
 22 GADIGAL AVENUE, ZETLAND

PROUDLY DEVELOPED BY **PAYCE** | SALES BY **LINK**