



2/56A Pirrama Road Pyrmont, NSW

 3

 3

 2

## Sensational views, size and harbourfront luxury

Immersed in a breathtaking panorama over Sydney's iconic skyline that transforms into a dazzling kaleidoscope of colour by night, this stylish Sydney Wharf residence offers a dress circle seat to the best show in town. It makes an instant impact with its palatial single level design that takes full advantage of the space, natural light and stunning outlooks over the city.

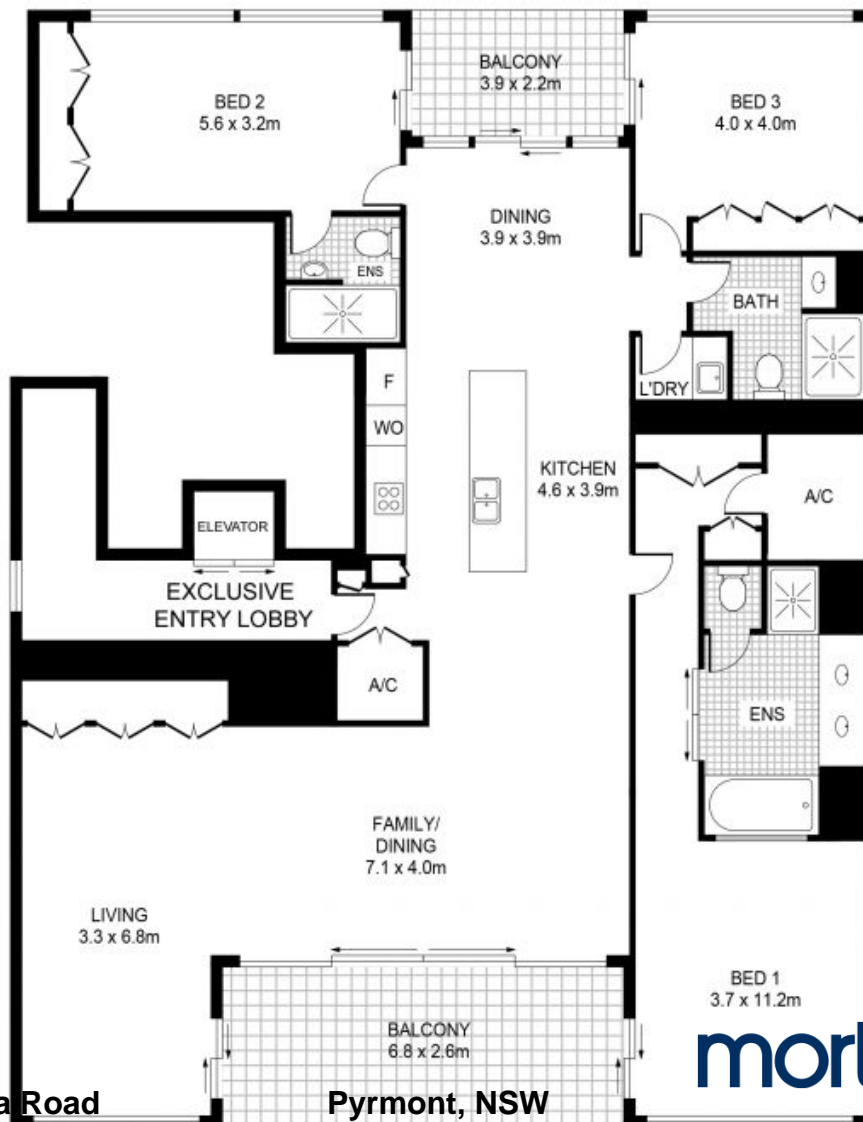
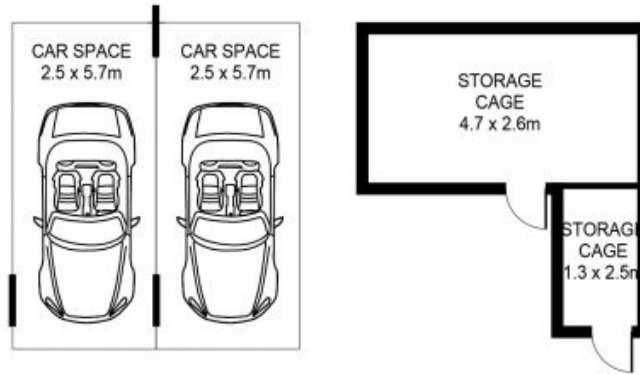
- Exclusively positioned at the southern end of the building
- A premium north east aspect and only one common wall
- An expansive layout featuring 274 sqm total area on title
- Open design that integrates seamlessly with the outdoors
- Large entertainment terrace set against a superb city backdrop
- Deluxe chef's kitchen with island bench and Miele appliances

The celebrated Sydney Wharf offers an enviable on-the-water living experience with easy ac

**Council Rates:** \$487.00 p/q  
**Water Rates:** \$178.00 p/q  
**Strata Rates:** \$5,670.00 p/q

**James Crow**  
 0410 593 057

**Maddison McAuliffe**  
 0438 544 328



2/56A Pirrama Road

Pyrmont, NSW