



353/3 Darling Island Road Pyrmont, NSW

3

3

2

A luxury statement in premium harbourfront style

Experience the ultimate in luxury harbourfront style and enjoy a superb combination of flowing interiors, state-of-the-art finishes and breathtaking views. Occupying a premium position to the northern edge of an exclusive waterfront cul-de-sac, this impressive penthouse offers a stunning entertainers' retreat with an intimate sense of privacy and security.

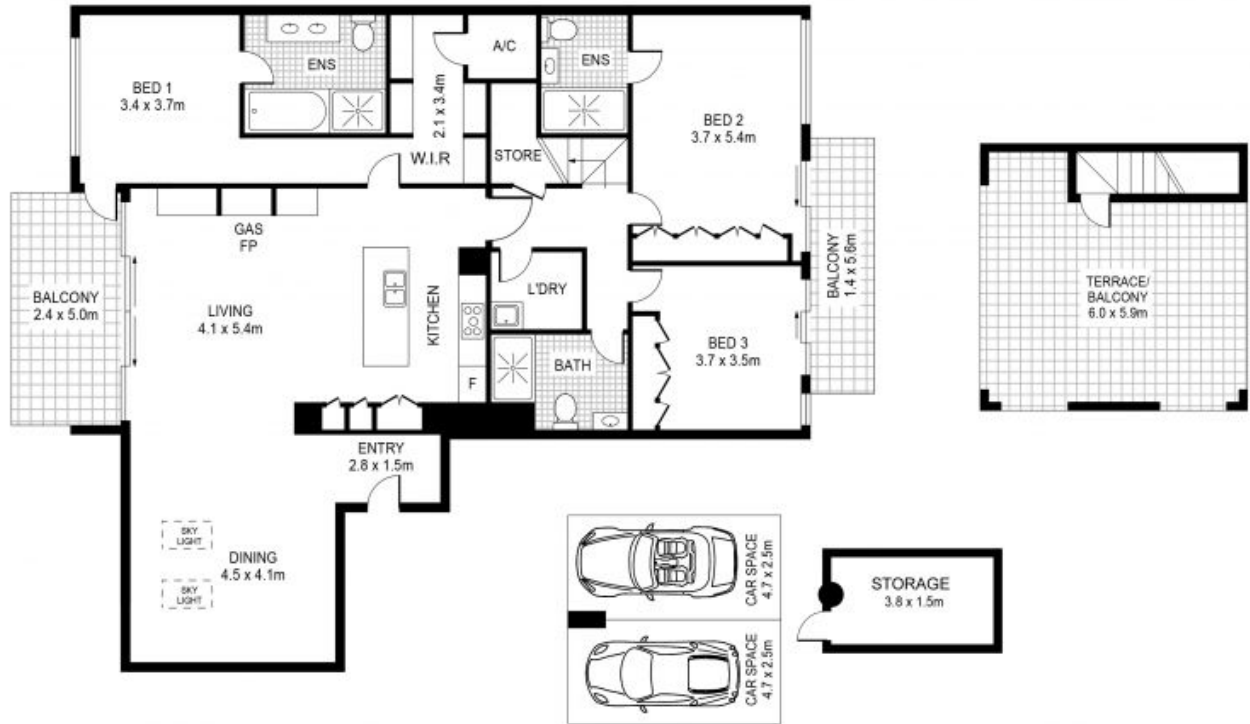
- Inspiring views over the bridge, Barangaroo and city
- Flowing open lounge/dining designed for the in/outdoor lifestyle
- Palatial rooftop entertaining with stunning 360 degree views
- Timber floors, custom cabinetry and fireplace
- Automated all weather rooftop vergola and balcony screens
- Sleek designer kitchen equipped with high-end Miele fittings
- Deluxe master suite with walk-in robe and full bath ensuite

Located on a quiet harbour front cul-de-sac and within footsteps to the glittering harbour

Council Rates: \$362.00 p/q
Water Rates: \$180.00 p/q
Strata Rates: \$4,870.00 p/q

James Crow
 0410 593 057

Maddison McAuliffe
 0438 544 328



This floor plan including furniture, fixture measurements and dimensions are approximate and for illustrative purposes only.



PYRMONT 353/3 Darling Island Road