



morton.

Wentworth Point 565/3 Baywater Drive

 2  2  1

Light-filled interiors, captivating garden outlooks and a location loaded with lifestyle advantages add instant appeal to this generously-sized two-bedroom apartment. Its elevated position in the Palermo building at The Waterfront gives it a leafy outlook over the complex landscaped grounds, plus it is stylishly appointed throughout and ready to move in and enjoy.

- A generous design featuring a bright and airy open living space
- Large north facing balcony that overlooks the resort facilities
- Two bedrooms both have built-in storage and balcony access
- Quality gas kitchen with stone benches and dishwasher
- Security car space plus lock-up storage and lift access
- Exclusive access to the Oasis outdoor swimming pool and gym
- Option to join the Pulse Club pool, steam room and tennis


View

As advertised or by appointment

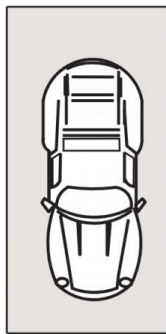
Agent

Dylan Choe

 0416 932 977

 dylan.choe@morton.com.au

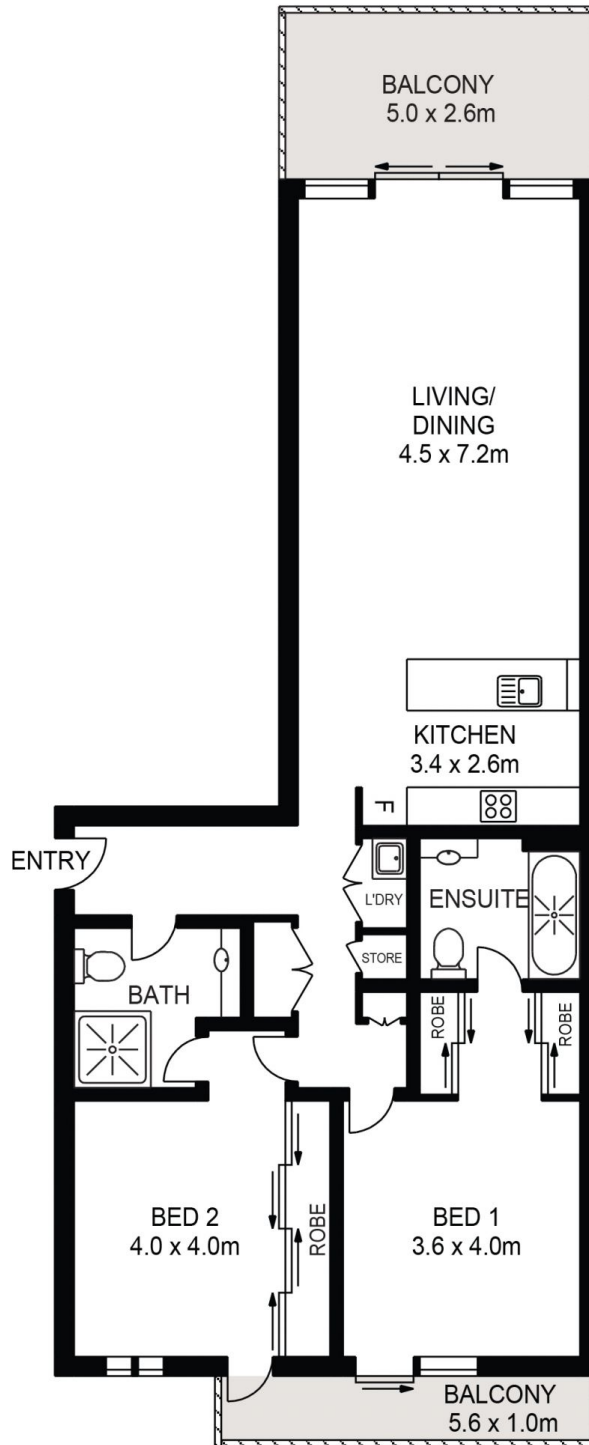
morton.com.au



ONE
CAR SPACE



STORAGE



APPROX. INT. AREA : 108m²

APPROX. EXT. AREA : 19m²

APPROX. TOTAL AREA: 140 m² (INCLUDING CARSPACE)

565/3 BAYWATER DRIVE, WENTWORTH POINT



www.assetphotographers.com.au

Please note these measurements are approximate only. The plans are intended as a rough guide for illustrative purposes. It is not warranted or guaranteed to be correct nor is it a part of the sale or rental contract.

