



# morton.

**Artarmon** 55/421 Pacific Highway

3 2 2

Northview embraces a leafy aspect and sweeping panoramic views that stretch to the Harbour Bridge and city skyline. This stunning three bedroom unfurnished apartment includes a Double Lock-up Garage with storage and is a haven of light and space. Well appointed throughout with quality contemporary enhancements, it is little more than a short stroll to village life.

- Expansive open plan entertaining areas, sunroom
- Generous bedrooms, mirrored built-ins, master with walk-in robes and ensuite
- Sleek kitchen has stone benches, gas appliances, internal laundry
- BBQ balconies with double-glazed sliding doors, air conditioning and polished timber floorboards
- Double lock-up garage (DLUG) with ample storage, very secure entrance
- Facilities include indoor pool, gym, games room (large pool table and table tennis table) and concierge
- Secure entrance to plenty of visitor parking and secure

## View

As advertised or by appointment

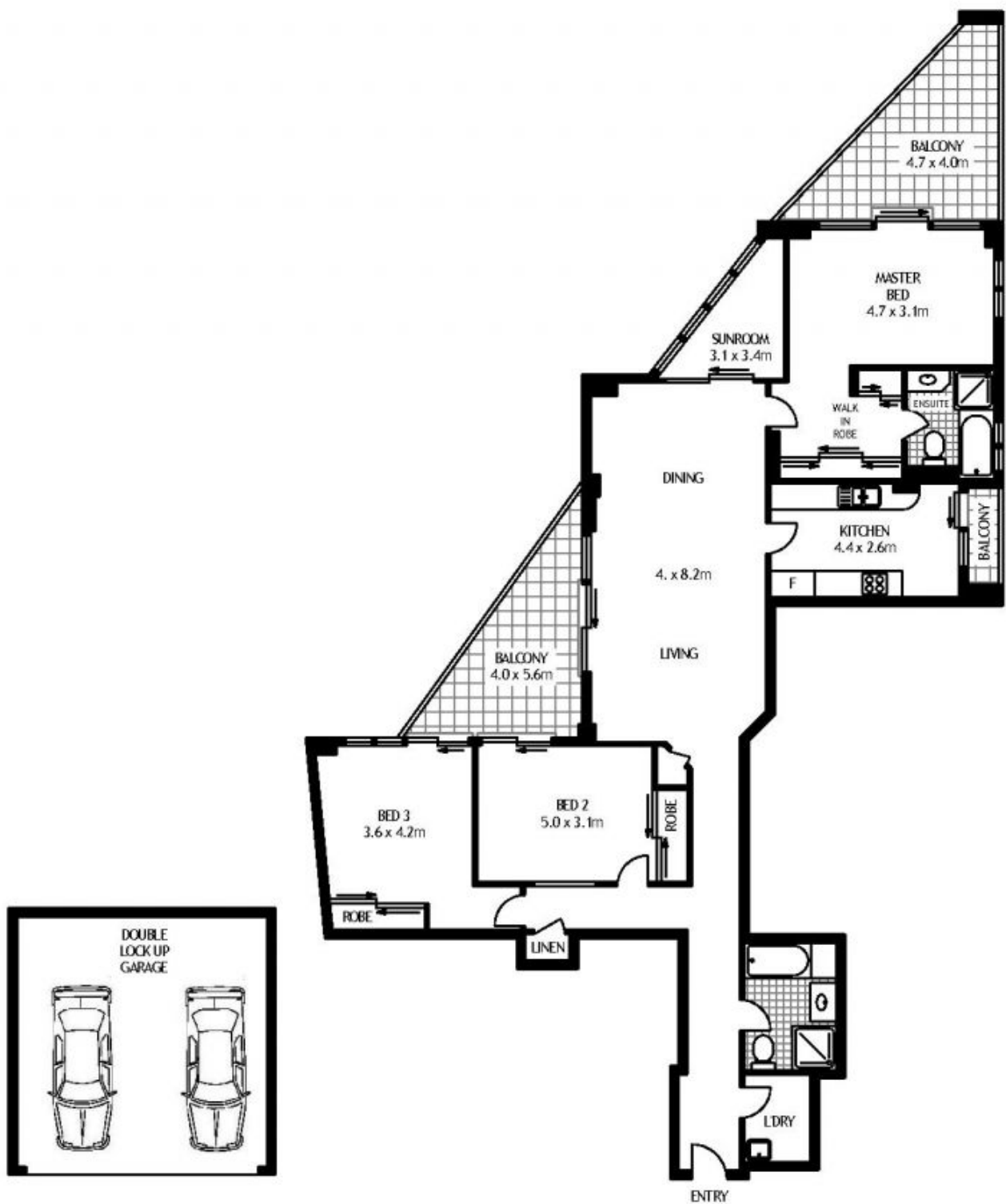
## Agent

**Sarah Fowell**

0437 492 129

sarah@morton.com.au

**morton.com.au**



NINTH FLOOR



55/421 PACIFIC HWY

ARTARMON

SCAPE Floor Planing Disclaimer: This floor plan is conceptual only. It is provided for illustrative purpose only and should not be relied upon. We make no guarantees to the correctness of this plan. All interested parties should make and rely on their own enquiries to determine the accuracy of the information contained in this floor plan.