



132/28 Pelican Street Surry Hills, NSW



### Unique sub-penthouse North facing apartment

Light filled throughout and featuring generous proportions, this beautifully updated sub-penthouse security apartment captures enviable park and city outlooks from its elevated corner position in 'Madison' Apartments. Entertain with a glorious wraparound covered balcony, bathed in the north facing light. Both bedrooms feature generous proportions, and a separate dining room area is a superb bonus.

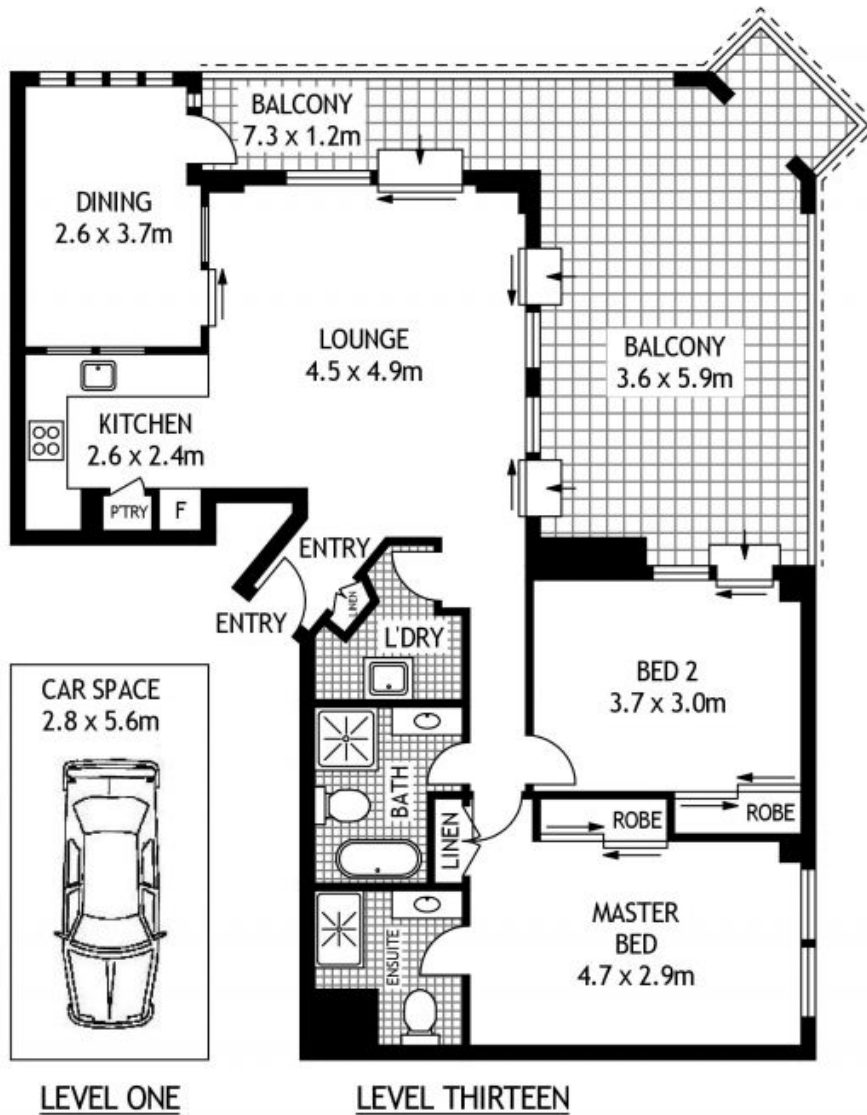
- Newly renovated kitchen and bathroom, premium finishes throughout
- Master bedroom with a mirrored built-in plus ensuite with a bath
- Second bedroom has a built-in robe and direct access to the balcony
- Two full size bathrooms, internal laundry, ducted air conditioning
- One shared wall and only two apartments on this level
- Dual elevator access to lobby and secure car space (separate title)

A cosmopolitan offering in the heart of one the world's premier lifestyle communities, thi

**Council Rates:** \$297.00 p/q  
**Water Rates:** \$150.00 p/q

**Ettiene West**

0410 593 749



132/28 PELICAN STREET

SURRY HILLS

SCAPE Floor Planing Disclaimer: This floor plan is conceptual only. It is provided for illustrative purposes only and should not be relied upon. We make no guarantee as to the correctness of this plan. All interested parties should make and rely on their own enquiries in determining the accuracy of the information contained in this floor plan.

132/28 Pelican Street

Surry Hills, NSW