



# morton.

**Penrith** 107/101C Lord Sheffield Circuit

 1  1

With the abundance that 'Thornton Estate' has on offer, there's no question why this vibrant community is such a sought-after place to live, work and play. When it comes to modern life, this one bedroom apartment delivers on every level.

- North-west facing allowing for great light
- Large glass slider doors for seamless indoor/outdoor living
- Open living and dining area with a dark colour scheme
- Top of the range kitchen, stone benchtops, European appliances
- Beautifully tiled bathroom and LED lighting under wall cabinet
- Internal laundry with dryer, pet friendly body corporate
- Storage cage, lift access, ground floor position.

### View

As advertised or by appointment

### Agent

**David Lipman**

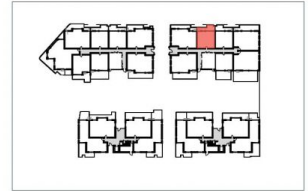
 0409 663 535

 david@morton.com.au

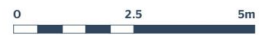
[morton.com.au](http://morton.com.au)



# Apartment C107 1 Bed



Internal 51 m<sup>2</sup>  
External 13 m<sup>2</sup>  
**Total 64 m<sup>2</sup>**



**THORNTON**  
ThorntonCentral.com.au

Disclaimer: This floor plan has been prepared for marketing purposes only. All descriptions, dimensions, depictions and other details in this floor plan (together, the "Information") may not be to scale. The vendor reserves the right to vary or amend the information without notice. The information may vary from the actual dimensions, layout, and characteristics of the property as built. No third party has any authority whatsoever, either expressly or impliedly, to make or give any representation or warranty or to bind the vendor in connection with the information or the property.

Date issued: 2/10/2014 Version: 01