



201/8-10 Fitzroy Place Surry Hills, NSW

 2  2  1

## Surry Hills' Brand New Luxury Address

Newly completed and available now, these stunning apartments in 'The Fitzroy' are a real hidden gem; a boutique new development tucked away in a hidden cul-de-sac between Crown and Bourke Streets on the city fringe.

All apartments claim a north aspect and showcase oversized floor plans creating a unique sense of space, premium quality finishes and generous courtyards or balconies with lift access and sweeping views to the city from the upper floors.

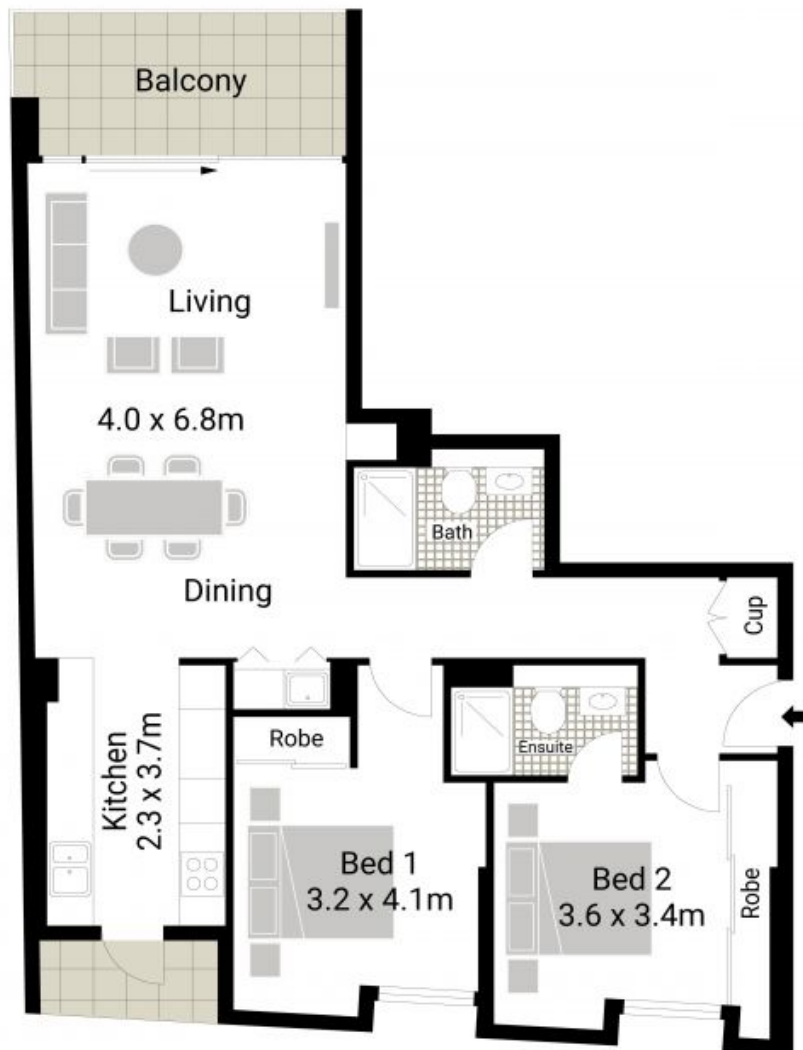
All apartments claim a north aspect and include private storage cages; 11 of the 18 residences come with secure parking, and the building is crowned by a rooftop terrace offering panoramic district and city skyline views. 'The Fitzroy' is ideally placed within a short walk of fine dining restaurants, cafes, entertainment venues, shopping and transport includ

**Council Rates:** \$296.00 p/q  
**Water Rates:** \$183.00 p/q

**Ettiene West**  
 0410 593 749

**Steven Antoniou**  
 0418 960 784

**THE FITZROY**  
8 Fitzroy Place Surry Hills



INTERNAL AREA      :- 80 SQM  
BALCONY AREA      :- 9 SQM  
TOTAL                    :- 89 SQM

**201/8-10 Fitzroy Place**

**Surry Hills, NSW**

201 / 8 Fitzroy Place, Surry Hills

All information contained herein is gathered from sources we believe to be reliable. We cannot however guarantee its accuracy and interested parties should make and rely on their own enquiries.