



# morton.

**Pyrmont** 6/9 Quarry Master Drive

2 2 1

This unique two bedroom apartment offers comfort and tranquility in a central and exclusive neighborhood. With an over-sized living area, two bedrooms, two bathrooms and lock up garage, this apartment is the perfect choice for those looking to live among the cafes, bars, shops and parks of Pyrmont.

- Open plan living, kitchen and dining rooms
- Italian marble tiled kitchen bench-top, ample storage, quality Smeg appliances
- Large master bedroom, en-suite, generous walk-in wardrobe
- Spacious second bedroom and main bathroom with bath
- Reverse cycle air conditioning installed
- Large lock-up garage in secure basement parking area
- Shared facilities include rooftop pool, sauna and gym

### View

As advertised or by appointment

### Agents

#### Christina Tsousta

0408 577 427

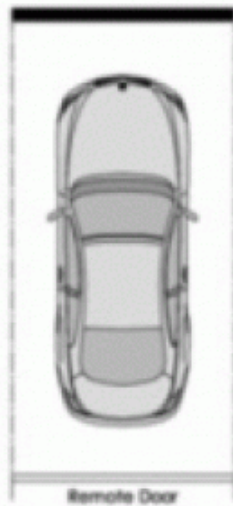
christina.tsousta@morton.com.au

#### Naomie Texier

0439 247 710

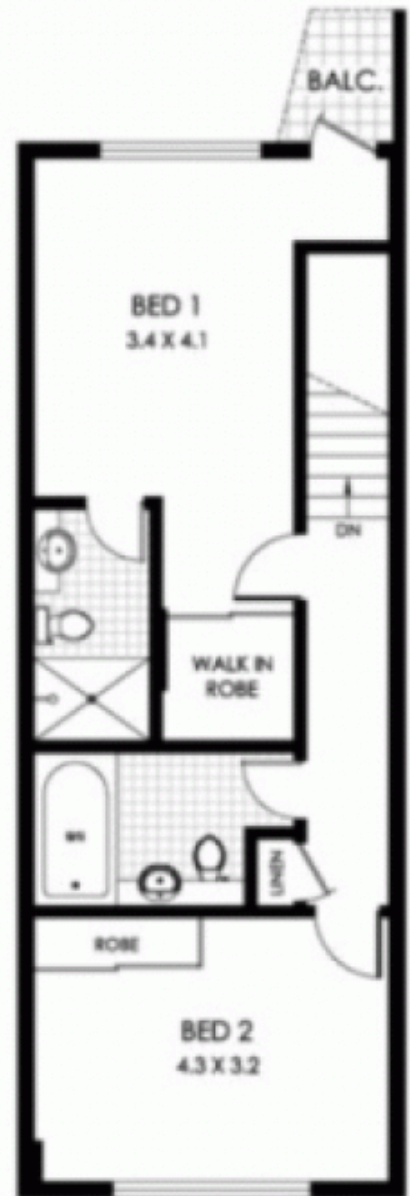
naomie@morton.com.au

[morton.com.au](http://morton.com.au)

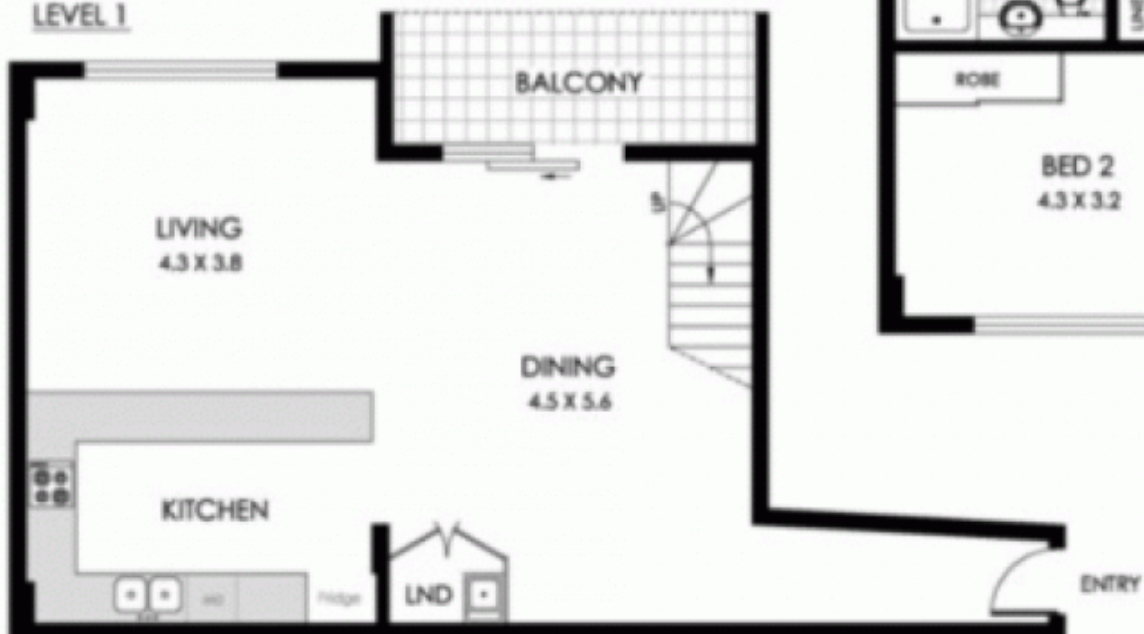


**GARAGE IN  
BASEMENT  
SECURITY**

**LEVEL 2**



**LEVEL 1**



0 1 2 3 SCALE (METRES)

PLANS SHOWN ARE ONLY INDICATIVE OF LAYOUT. DIMENSIONS ARE APPROXIMATE

All information contained herein is gathered from sources we believe to be reliable, however we cannot guarantee its accuracy and interested persons should rely on their own enquiries. Dimensions are approximate.



**6/9 QUARRY MASTER DRIVE**

**PYRMONT**

Apartment Size: 113m<sup>2</sup>