



morton.

Woolloomooloo 502/6 Cowper Wharf Roadway

 1  2  1

Expertly renovated for a premium on-the-water living experience, this stunning Finger Wharf residence has been custom designed and finished with flair and creativity to offer a breathtaking harbourfront home. Set against a magnificent city and harbour backdrop, it showcases impeccable interior design with bright contemporary spaces and many high-quality bespoke finishes throughout.

- A flowing two-level design featuring 93sqm internal space
- Light and spacious design with tall double height ceilings
- Views over the marina, Botanic Gardens and city skyline
- Contemporary kitchen with fittings imported from Italy
- A generous upper-level bedroom with fitted wardrobe
- Designer bathroom featuring a deluxe freestanding tub
- Recently installed Temperzone air-conditioning unit
- Lift access, 24-hour security and a secure parking space

View



As advertised or by appointment

Agents

Noel Jenkins

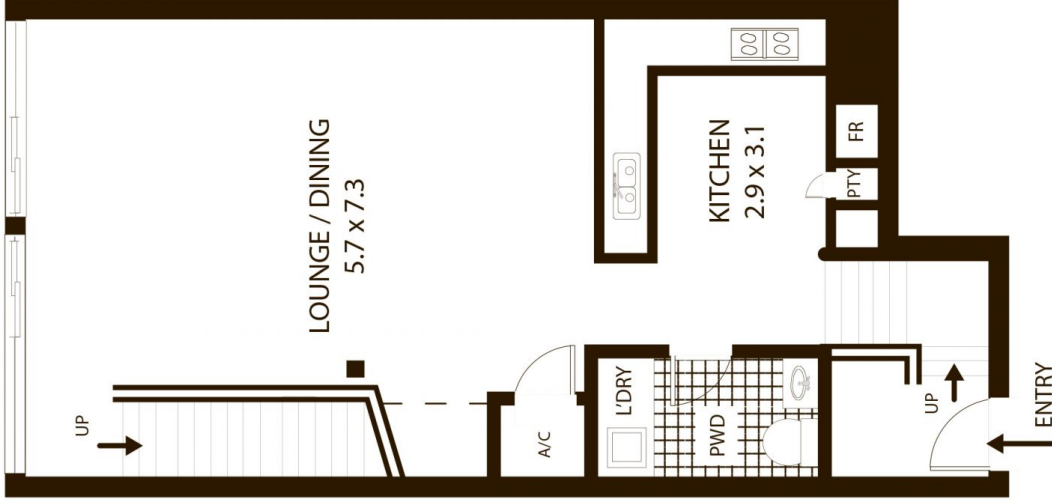
 0410 593 694
 noel@morton.com.au

Amanda Clement

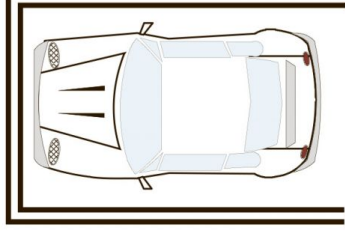
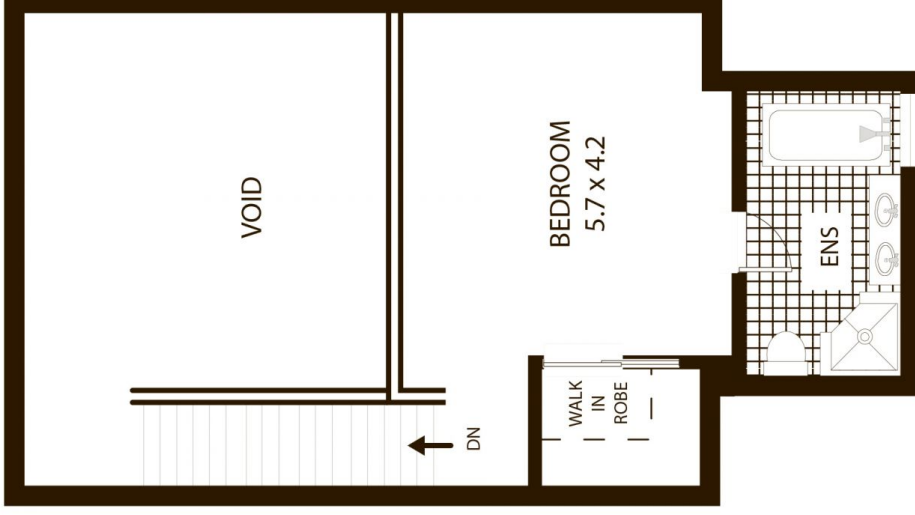
 0448 016 404
 amanda.clement@morton.com.au

morton.com.au

ENTRY LEVEL



UPPER LEVEL



SINGLE
SECURE CAR SPACE
(located on Lincoln Cres)



502/6 Cowper Wharf Road, Woolloomooloo

All measurements are approximate only. Plan is provided as an indication of layout