



# morton.

**Wentworth Point** 306/5 Stromboli Strait

2 2 2

Space, light and quality come together in this two-bedroom apartment to provide a generous modern home tucked away in the sought-after "The Waterfront" community. Set in the quality Corfu building, the light filled residence delivers a great low maintenance property with fresh interiors, good proportions and a choice of outdoor areas for entertaining.

- Generous open design featuring living and dining areas
- Two bedrooms positioned at opposite ends of the floorplan
- Sheltered BBQ terrace that flows easily off the living space
- A huge lock up garage with parking space for up to three cars
- Designer gas kitchen that opens onto a second rear balcony
- Full main bathroom, ensuite plus separate internal laundry
- Air-conditioning, secure lift access and intercom entrance
- Option to join the Pulse Club pools, gym and tennis courts

## View

As advertised or by appointment

## Agents

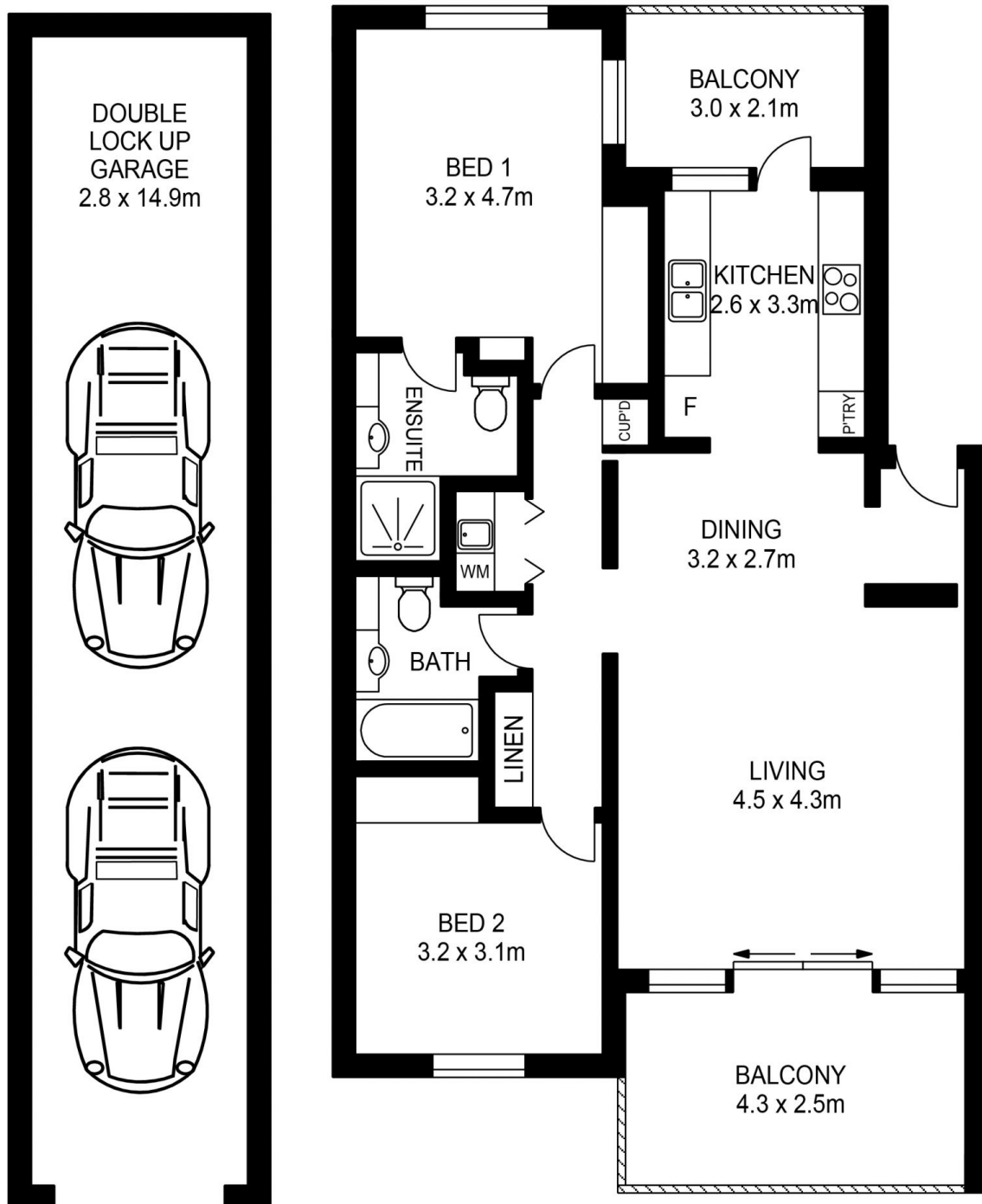
### Dylan Choe

0416 932 977  
dylanchoe@morton.com.au

### Akanksha Chaudhari

0447 201 786  
akanksha@morton.com.au

**morton.com.au**



APPROX. INT. AREA : 127m<sup>2</sup>

APPROX. EXT. AREA : 17m<sup>2</sup>

306/5 STROMBOLI STRAIT, WENTWORTH POINT



ASSET  
PHOTOGRAPHERS

[www.assetphotographers.com.au](http://www.assetphotographers.com.au)

Please note these measurements are approximate only.  
The plans are intended as a rough guide for illustrative  
purposes. It is not warranted or guaranteed to be correct  
nor is it a part of the sale or rental contract.

