



morton.

Wentworth Point 203/4 Stromboli Strait

🛏 2 🚿 2 🚗 1

Intuitively configured and designed for low maintenance living, this spacious unit is peacefully set in a boutique harbourside community. Filled with natural light and cross ventilation from the two separate balconies, this is the perfect lifestyle offering for those that demand quality and convenience.

- Spacious and open plan unit, total size of 138 sqm
- Open plan lounge and dining- stone benches, gas appliances
- Oversized bedrooms with built ins, renovated en-suite
- Spacious balcony, high ceilings and videophone intercom
- Reverse cycle air-conditioner
- Resort facilities include pool, gym, library and tennis courts
- Just metres to cafes, shops and a bustling village lifestyle

View

As advertised or by appointment

Agents

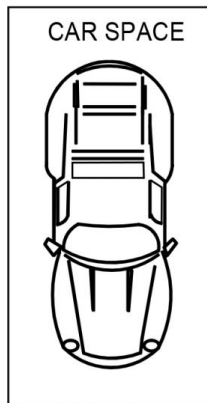
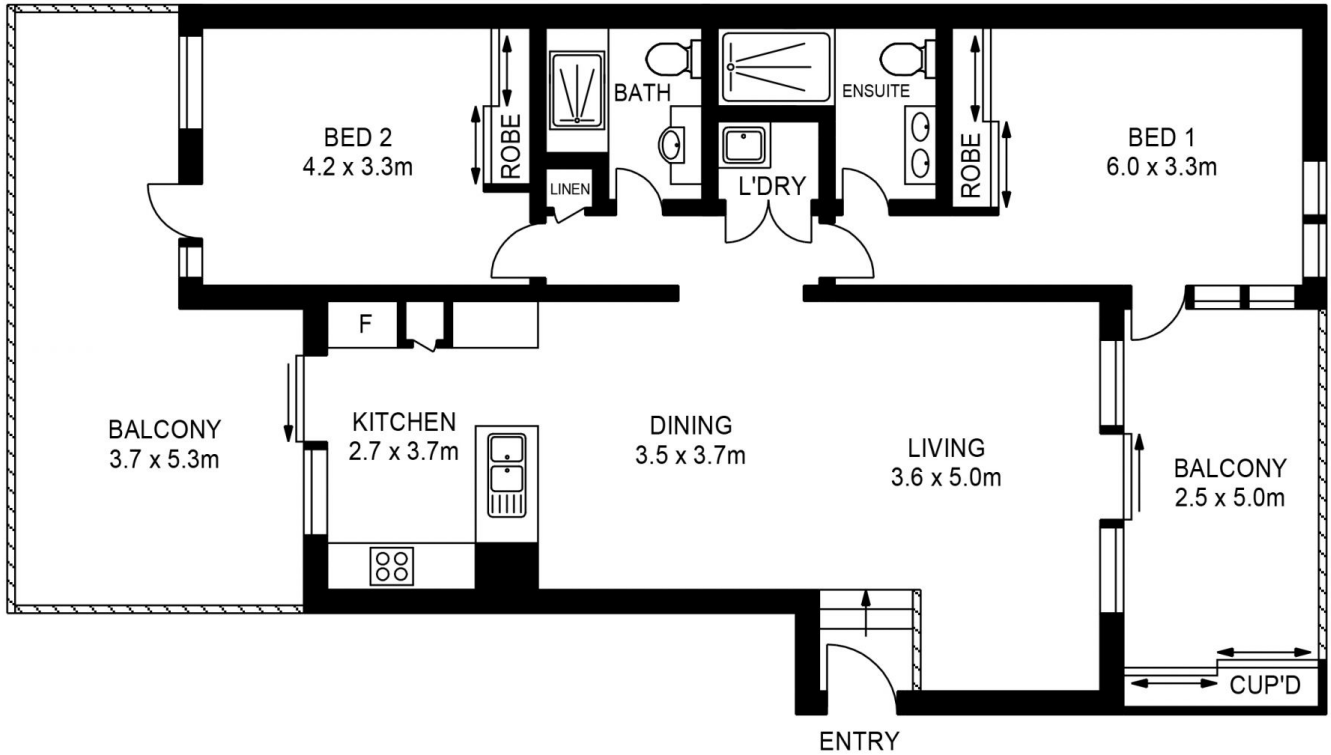
Dylan Choe

📞 0416 932 977
✉ dylanchoe@morton.com.au

Akanksha Chaudhari

📞 0447 201 786
✉ akanksha@morton.com.au

morton.com.au



APPROX. INT. AREA : 90m²

APPROX. EXT AREA : 47m²

203/4 STROMBOLI STRAIT, WENTWORTH POINT



www.assetphotographers.com.au

Please note these measurements are approximate only. The plans are intended as a rough guide for illustrative purposes. It is not warranted or guaranteed to be correct nor is it a part of the sale or rental contract.

