



morton.

Woolloomooloo 217/6 Cowper Wharf Roadway

3 2 1

Immediately impressive thanks to its premium harbourfront position towards the northernmost tip of The Finger Wharf, this generously proportioned apartment offers a supremely spacious retreat with sparkling outlooks across the water to the city skyline. It features fresh, light & airy interiors, tasteful modern finishes and a prime location right on the water.

- A flowing single level floorplan with good cross flow of air
- Light filled open design with living and dining spaces
- Large floor-to-ceiling windows enhance light and city views
- Two generous bedrooms plus an extra study/third bedroom
- The large master suite has a walk-in wardrobe and ensuite
- Private entertainment balcony overlooking the marina
- Quality gas kitchen, guest bathroom and internal laundry
- Security car space, intercom entrance and lift access

View

As advertised or by appointment

Agents

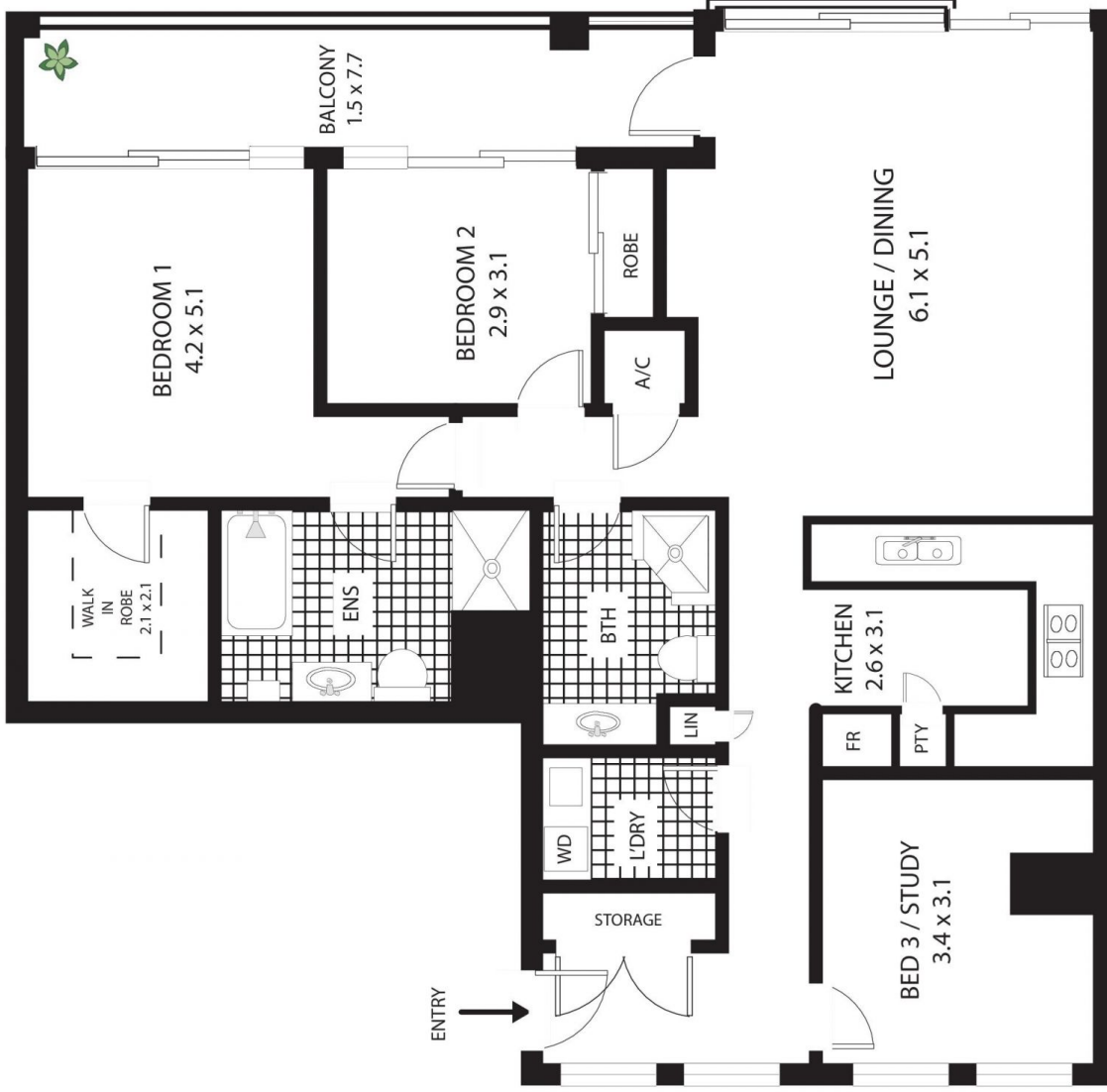
Noel Jenkins

0410 593 694
noel@morton.com.au

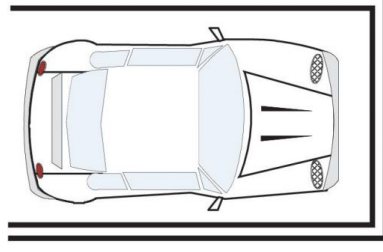
Amanda Clement

0448 016 404
amanda.clement@morton.com.au

morton.com.au



SINGLE
SECURE CAR SPACE



217/6 Cowper Wharf Road, Woolloomooloo

All measurements are approximate only. Plan is provided as an indication of layout