



morton.

Riverwood 206/7 Washington Avenue

 2  2  1

Crisp, fresh and full of natural light, this stylish 'Çomo' apartment provides a low care designer lifestyle in the premier Washington Park community. It combines bright airy interiors, sleek modern finishes and a large courtyard-sized terrace to deliver an excellent property that is quietly tucked away just a few minutes to local Riverwood Centre.


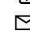
- Convenient position with two private courtyards
- Generous open plan design
- Contemporary kitchen with gas appliances
- Two double bedrooms plus a separate study area
- Security parking space, air-conditioning and intercom
- Good sized bathroom, ensuite and internal laundry

View



As advertised or by appointment

Agents

Ray Li

 0401 311 667
 ray.li@morton.com.au

Nada Fayad

 0408 376 995
 nadaf@morton.com.au

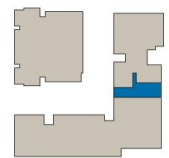
morton.com.au



**APARTMENT 206
LOT 87
2BED + STUDY**

Internal	85sqm
External	34sqm
Total	119sqm

COMO



1300 111 088
www.washingtonpark.com.au



Proudly developed by
Disclaimer: This floor plan has been prepared for marketing purposes only. All descriptions, dimensions, depictions and other details in this floor plan may not be to scale and may vary from the property as built. Your attention is drawn to the special conditions of the contract for sale of land. No third party has any authority to make or give any representation or warranty in relation to the property unless the representation or warranty is confirmed by Payce Communities No.1 Pty Limited and included in the contract for sale of land. [Rev A 13 05 13]

