



morton.

Pyrmont E802/24-26 Point Street

 2  2  2

View

As advertised or by appointment

Agent

James Crow

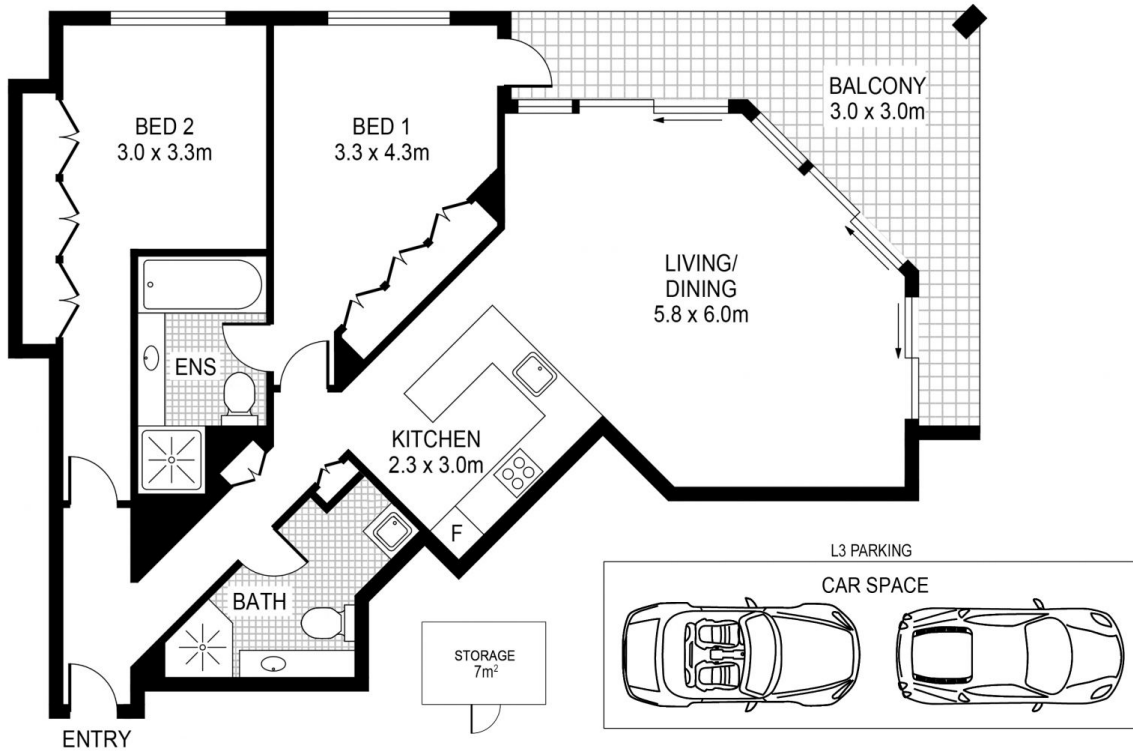
 0410 593 057

 james@morton.com.au

The spectacular surrounds of the Sydney skyline, Barangaroo and the Harbour Bridge form a dazzling backdrop to this light filled executive apartment. Having undergone a meticulous renovation this ultra stylish home is practical in its design and generous in its layout, it offers the ultimate city-edge lifestyle with flowing interiors, quality finishes and a user-friendly oversized floor plan. The prestige Watermark complex is renowned for its superb facilities and great position close to the light rail and Darling Harbour's renowned cafes and restaurants.

- Prized north-east position with spectacular 270-degree views
- Wraparound terrace with concertina sliding doors
- Bespoke renovated kitchen fitted with quality appliances
- Double bedrooms include a master with walk-in and ensuite
- Security parking for two cars plus exclusive storage cage
- Ducted air-conditioning, intercom entrance and internal storage
- Onsite resort facilities include a 25m swimming pool and gym

morton.com.au



This floor plan including furniture, fixture measurements and dimensions are approximate and for illustrative purposes only.



PYRMONT E802/24 Point Street

morton.