



# morton.

**Wentworth Point** 110/3 Stromboli Strait

 2  2  2

With respect to the government's restrictions around open homes and to help stop the spread of COVID-19, our properties may be viewed by appointment only and only 1 person may inspect at a time. Please submit an online enquiry or contact the listing agent for more information.

Situated in Napoli within The Waterfront Estate, this modern low maintenance two bedroom courtyard apartment is the perfect residence for lifestyle and convenience. This property is located directly across from public transport links, you'll be footsteps away from Wentworth Point's exclusive Pulse Club for your fitness needs. You'll find The Piazza, Marina Square, and Pierside retail quarters reachable within moments, and surrounding parklands and recreational facilities at your fingertips. This neat abode is sure to meet your lifestyle requirements.

Property features include:

- Spacious apartment 151sqm in total
- Brand new carpets throughout & freshly painted

[morton.com.au](https://www.morton.com.au)

### View

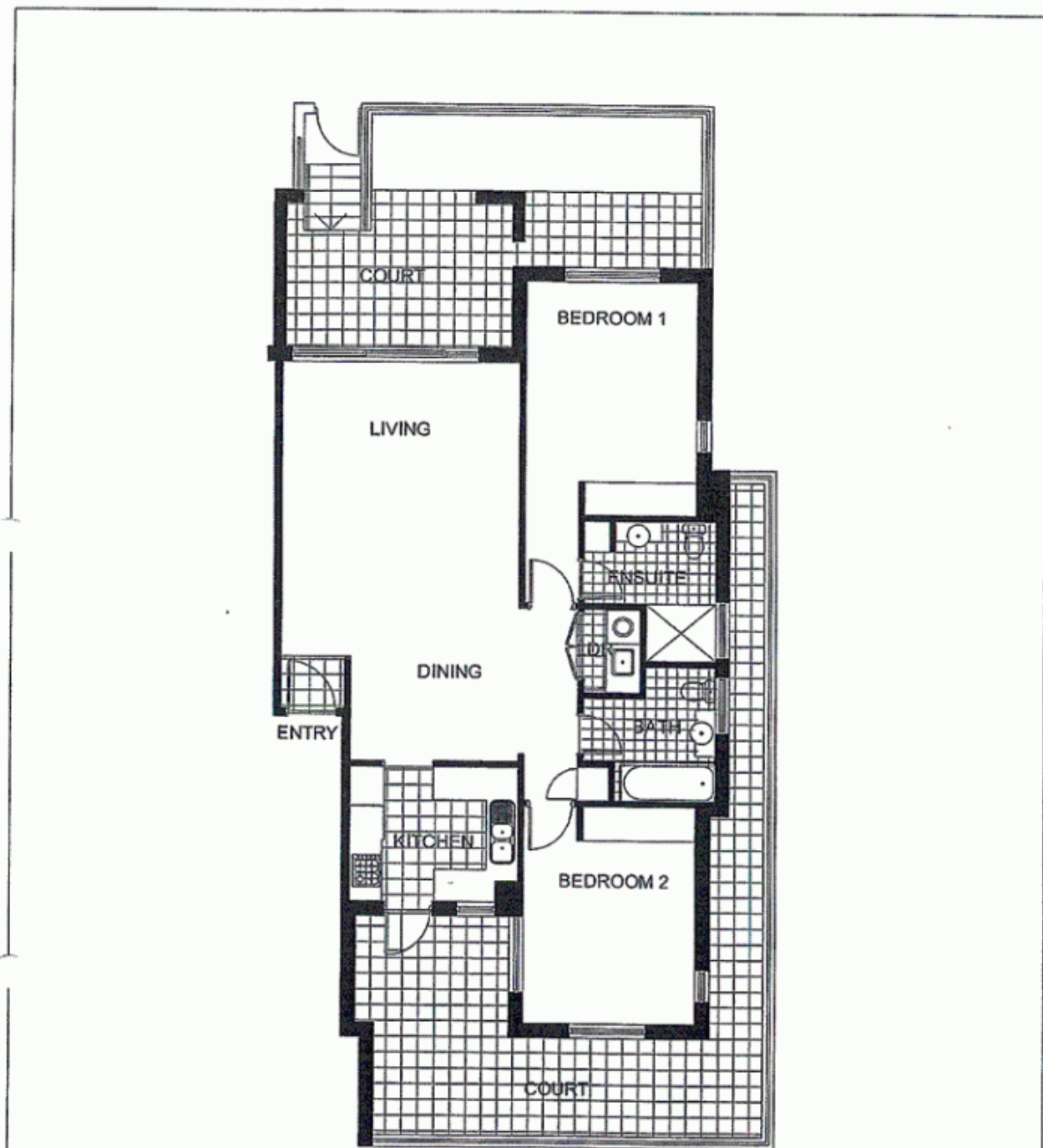
As advertised or by appointment

### Agent

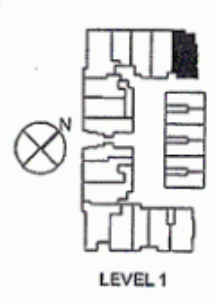
**Nevena Petrovic**

 0428 835 910

 [nevena@morton.com.au](mailto:nevena@morton.com.au)



*"The information contained herein is intended as an introduction to the general content of the project and is subject to variation. Interested parties should rely on their own enquiries and the contract for sale. The developer reserves the right to vary from these descriptions as it deems necessary or as any relevant authority may require."*



**THE WATERFRONT**  
AT HOMEBUSH BAY

<b>2 BEDROOM</b>	<b>APARTMENT 110</b>	<b>TYPE D</b>
INTERNAL AREA 93 sqm	OUTDOOR AREA 58 sqm	TOTAL AREA 151 sqm
<b>NAPOLI</b>		