



**morton.**

**Surry Hills** 701/156-160 Goulburn Street

2 1 1

"Please enter via Brisbane Street for all one on one appointments"

Set on the 7th floor in the highly sought after "Belvedere Building" this modern two-bedroom apartment offers sleek interiors and quality finishes with wooden flooring throughout. Quietly located in the heart of Surry Hills, this property offers a contemporary lifestyle and with its central location creates a perfect inner city dwelling.

- Generous size living/dining area
- Well-maintained, bright interiors
- Main bedroom with built-in robe
- Undercover security parking
- Modern bathroom with separate laundry
- Secure building with lift access and video intercom
- Private balcony off the living area, ideally for entertaining
- Excellent first home or ideal investment

#### View

As advertised or by appointment

#### Agents

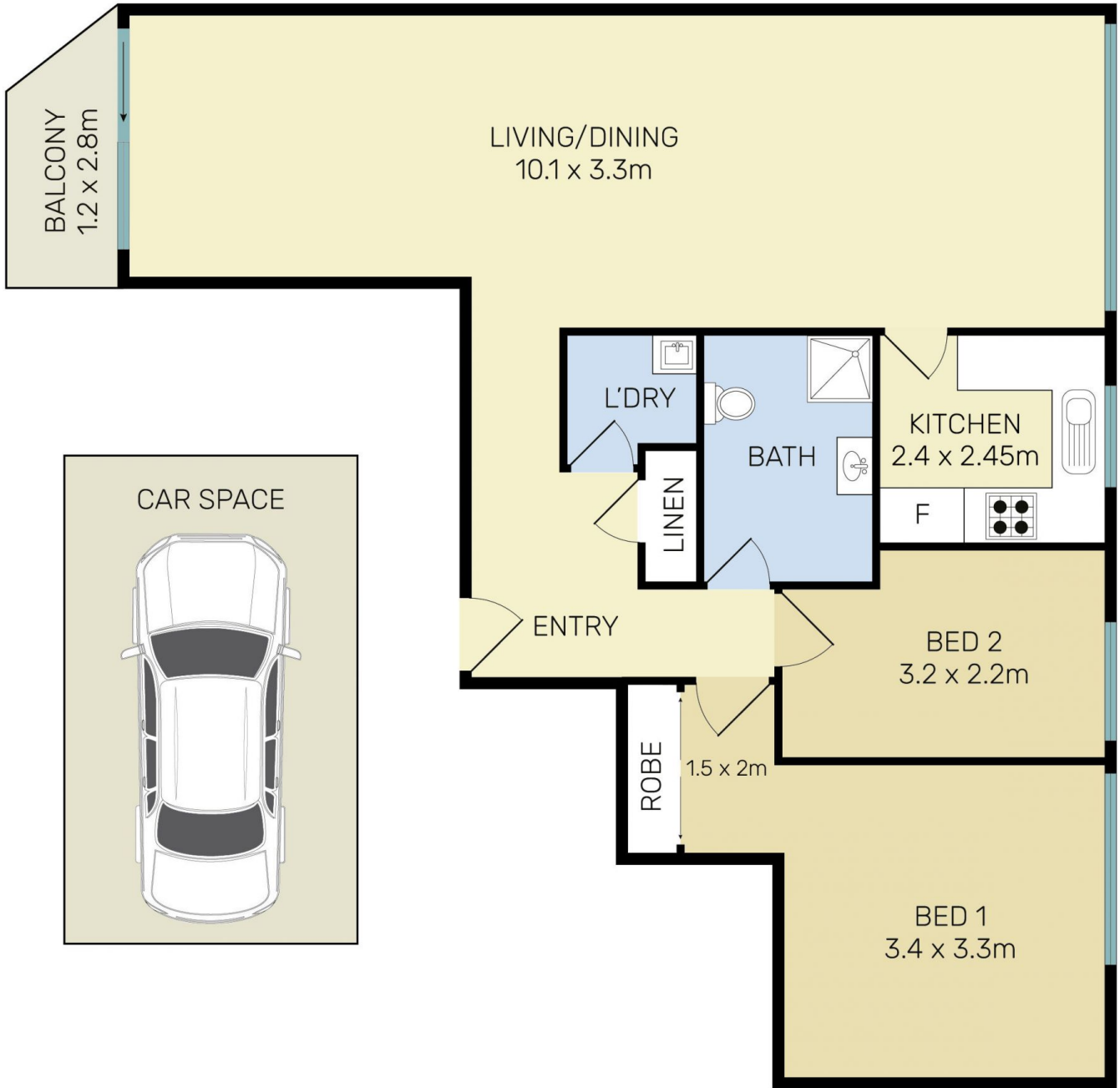
##### Ettiene West

1300 858 221  
 ettiene@morton.com.au

##### Emma Ryan

1300 858 221  
 emmar@morton.com.au

[morton.com.au](http://morton.com.au)



All information contained herein is gathered from all sources we believe to be reliable. However we cannot guarantee its accuracy and interested parties should rely on their own enquiries.



**701/160 Goulburn Street, Surry Hills**