



morton.

Pyrmont S505/231-241 Harris Street



Quietly positioned at the rear of a renowned security building and offering a well maintained lifestyle of comfort and convenience. Opening to Ada Place just a stroll to the bustling caf? scene of Pyrmont village.

- Affordable entry into a highly prized community
- Expansive open plan lounge and dining area flowing onto balcony
- Integrated kitchen is complete with gas appliances
- Generous master bedroom with mirrored built-ins
- Well proportioned bathroom with new vanity and internal laundry
- Freshly painted and newly laid flooring throughout
- Concierge, secure parking, pool and gymnasium

Ideal for the couple or investor and set within a matter of moments to the heart of the city and the inner west, it is no more than a stroll to the Fish Markets, the light rail, The Star

View

As advertised or by appointment

Agents

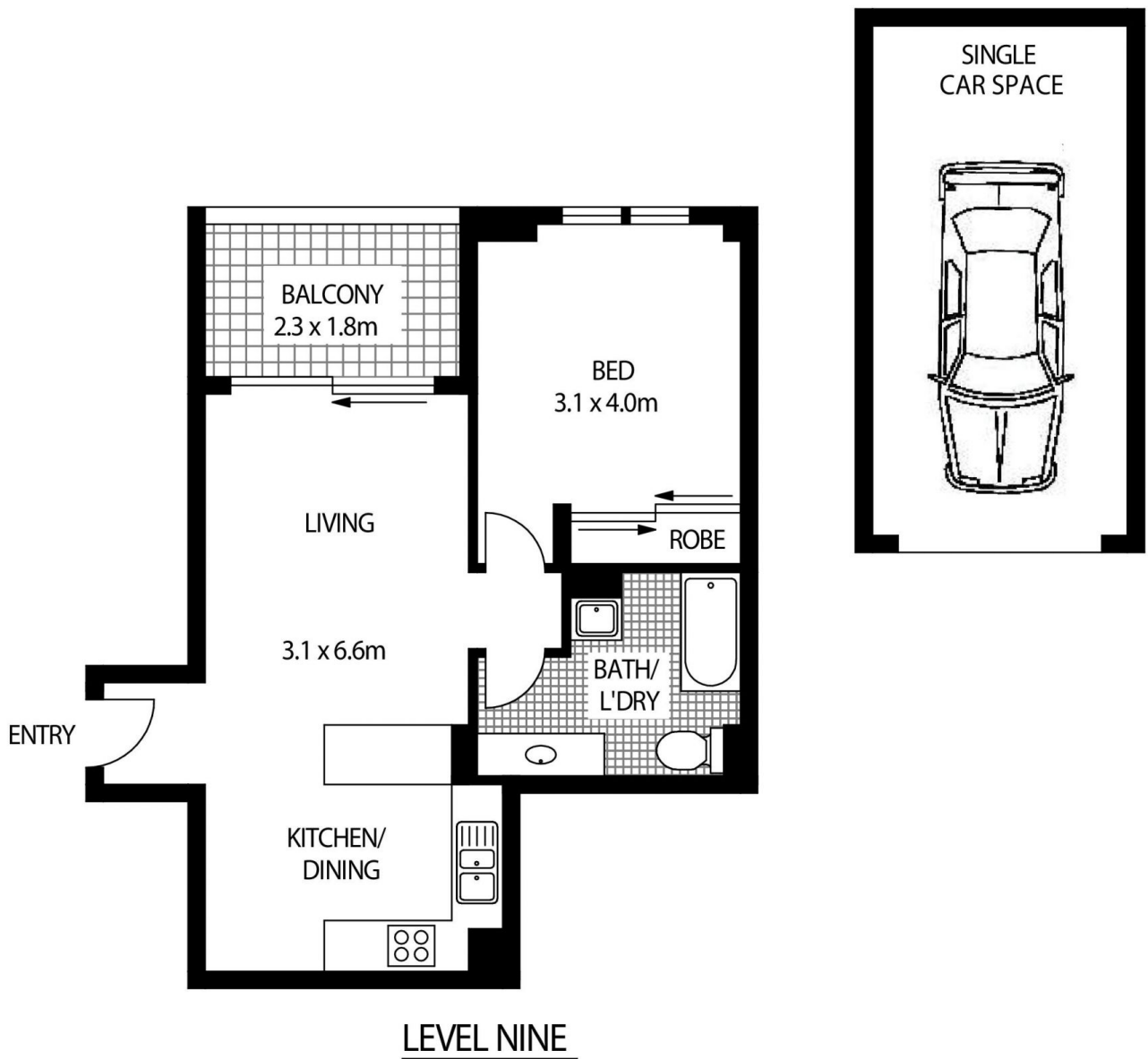
Ian Qiu

- ☎ 1300 858 221
- ✉ ian@morton.com.au

Natasha Giannone

- ☎ 1300 858 221
- ✉ natasha@morton.com.au

morton.com.au



S505/233 HARRIS STREET

PYRMONT

SCAPE Floor Planing Disclaimer: This floor plan is conceptual only, it is provided for illustrative purposes only and should not be relied upon. We make no guarantees to the correctness of this plan. All interested parties should make and rely on their own enquiries in determining the accuracy of the information contained in this floor plan.