



morton.

Sydney 3109/91 Liverpool Street



With respect to the latest government's COVID-19 restrictions we will be conducting open homes and private appointments with mandatory face masks, sanitisation, QR code check ins, and 1 person per 4sqm. Please submit an enquiry or contact the agent to be kept up to date with inspection times and register your attendance for viewings.

This stunning north facing home boasts practicality and functionality. Situated on level 31 in World Tower in the heart of Sydney CBD, enjoy convenience of inner-city living coupled with the comfort of first-class facilities. In close proximity to Town Hall, Hyde Park, Darling Harbour and the newly completed light rail. Shopping, restaurants and cafes at your doorstep makes this the perfect option for any wanting to enjoy that Sydney CBD lifestyle.

- Fully furnished
- North facing with stunning open city views
- Dual access open balcony plus a winter garden
- Situated in the corner position with only one common wall

morton.com.au

View

As advertised or by appointment

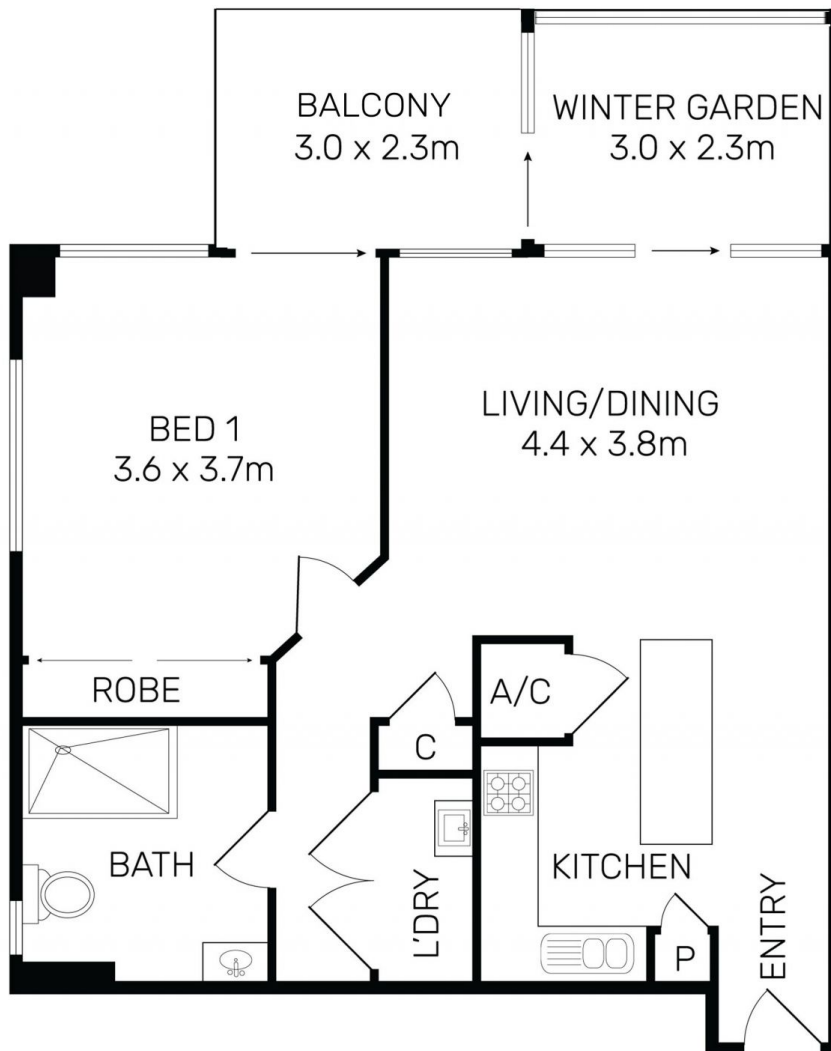
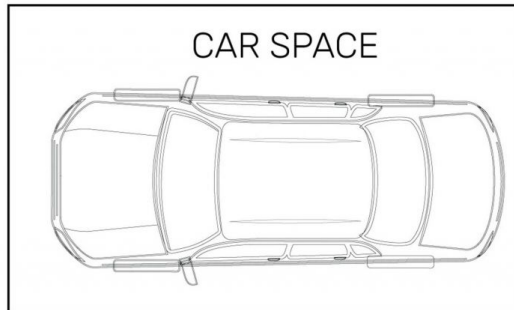
Agents

Sarah Fowell

📞 0437 492 129
✉ sarah@morton.com.au

Ferenc Goemoeri

📞 0447 025 423
✉ ferenc.goemoeri@morton.com.au



All information contained herein is gathered from all sources we believe to be reliable. However we cannot guarantee its accuracy and interested parties should rely on their own enquiries.

CampaignPROS