



morton.

Surry Hills 1302/20 Pelican Street

 1  1  1

An awe-inspiring fusion of glass, light and north facing views, this spacious one bedroom apartment is an investors dream. Crafted for the discerning few that seek low maintenance exclusivity and absolute convenience, this superb home is merely moments from the vibrant life of Surry Hills as well as Hyde park and the CBD.

- Perfectly suited to the investor or professional couple
- Prime opportunity to enter the Monument community
- Well proportioned open plan lounge and dining area
- Spacious master bedroom with built-ins
- North aspect, opera house and water views
- European laundry, air con and friendly concierge
- Manicured gardens, heated outdoor pool and gym


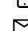
Ideally set no more than minutes to the city centre, a short walk to Hyde Park, museums, cafes, restaurants and train transport, it is moments to the entertainment venues of world

View


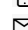
As advertised or by appointment

Agents

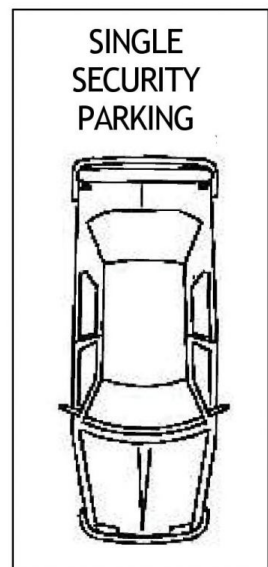
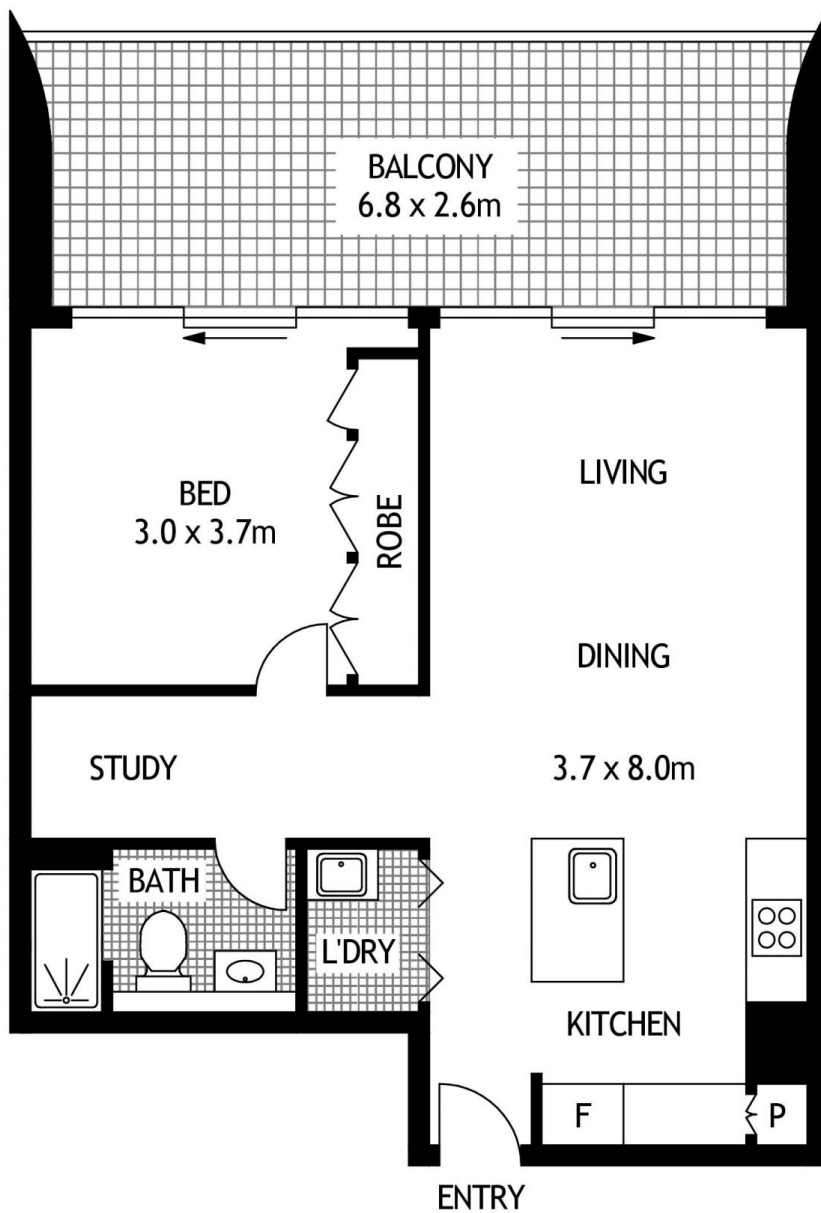
Ettiene West

 1300 858 221
 ettiene@morton.com.au

Emma Ryan

 1300 858 221
 emmar@morton.com.au

morton.com.au



LEVEL THIRTEEN



1302/20 PELICAN STREET

SURRY HILLS

SCAPE Floor Planing Disclaimer: This floor plan is conceptual only. it is provided for illustrative purposes only and should not be relied upon. We make no guaranteees to the correctness of this plan. All interested parties should make and rely on their own enquiries in determining the accuracy of the information contained in this floor plan.