



morton.

Chatswood 33 McLean Avenue

 4  2  2

Full of space, light and possibilities, this charming and peaceful family classic is inviting and warm, perfect to move into, yet has the potential to be so much more. It sits proudly on an expansive 1,682sqm garden block and holds excellent appeal that is ready to enjoy today, add your own touch or even subdivide and establish something new.

- Set in a tranquil leafy bush setting with expansive level lawns
- Well-proportioned interiors with natural light throughout
- Quality modern kitchen with island bench and gas cooktop
- Generous outdoor entertainment area with a bush outlook
- Three double bedrooms with built-ins plus a separate study
- Downstairs retreat/4th bedroom or office with own entrance
- The property comes complete with DA approved subdivision
- A long driveway with parking for at least three cars

The options are plentiful for buyers looking to capitalise on a

View

As advertised or by appointment

Agents

Lucy White

 1300 858 221

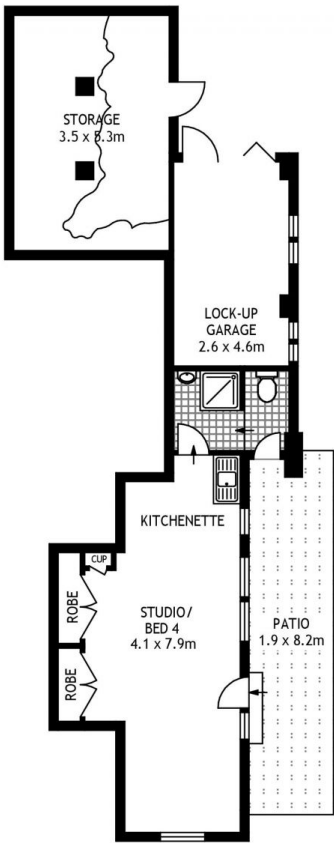
 lucy@morton.com.au

Ettiene West

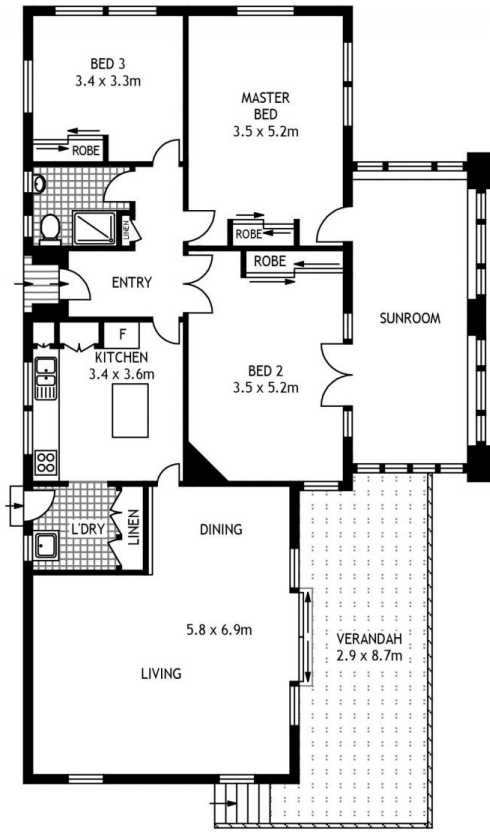
 1300 858 221

 ettiene@morton.com.au

morton.com.au



LOWER GROUND FLOOR



GROUND FLOOR



SITE PLAN



33 MCLEAN AVENUE

CHATSWOOD

SCAPE Floor Planning Disclaimer: This floor plan is conceptual only. It is provided for illustrative purposes only and should not be relied upon. We make no guarantee as to the correctness of this plan. All interested parties should make and rely on their own enquiries in determining the accuracy of the information contained in this floor plan.