



B902/24-26 Point Street Pyrmont, NSW



A showcase of penthouse luxury

A refined offering unmatched in outlook, quality and position, this award-winning residence designed by Arent and Pyke spans over 265sqms and is simply breathtaking. With a stunning interplay of natural light and flowing space throughout, this luxury penthouse with a north east aspect opens to embrace exceptional uninterrupted panoramic views across the harbour to the bridge and vibrant city skyline.

- Cleverly designed for effortless in/outdoor entertaining
- Enjoy a hot tub in privacy taking in panoramic city views
- Flowing open plan lounge and expansive BBQ terrace
- Palatial master with ensuite and his/her walk-in robe
- Solid full brick construction and only one common wall
- Superb granite kitchen boasts Miele gas appliances

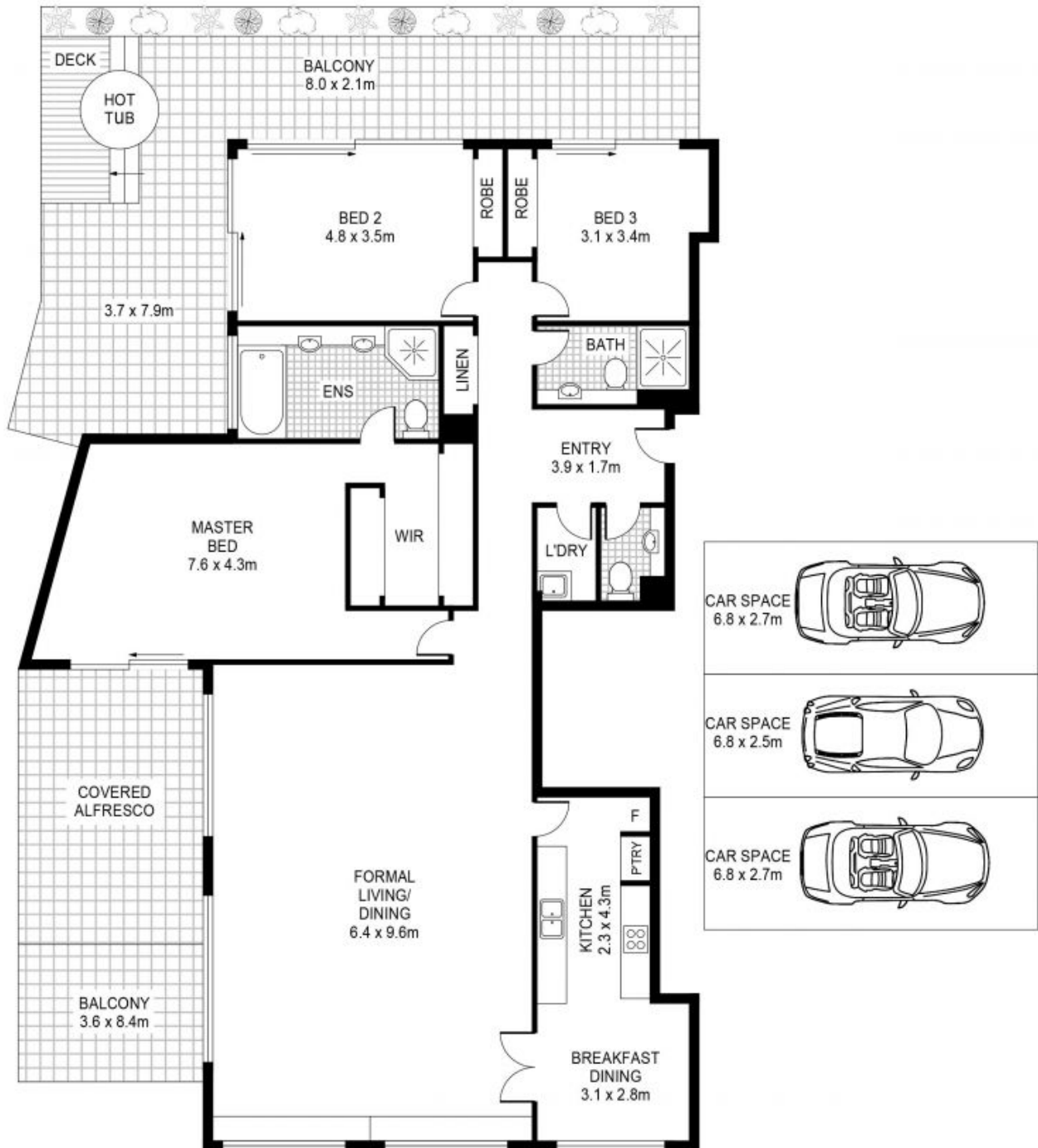
One of Pyrmont's most sought-after and exclusive penthouses, this immaculate residence is

Inspect:
Auction: 2021-11-09
Details: 18:00:00

Council Rates: \$486.90 p/q
Water Rates: \$150.99 p/q
Strata Rates: \$5,518.06 p/q

James Crow
 0410 593 057

Maddison McAuliffe
 0438 544 328



B902/24-26 Point Street

Pyrmont, NSW