



morton.

Penrith 405/101D Lord Sheffield Circuit

 2  2  1

With respect to the latest government's COVID-19 restrictions we will be conducting open homes and private appointments with mandatory face masks, sanitisation, QR code check ins, and 1 person per 4sqm. Please submit an enquiry or contact the agent to be kept up to date with inspection times and register your attendance for viewings.

Located next to Penrith train station and across the rail line to Westfield, this 100 sqm two bedroom unfurnished apartment in the Thornton development, offers convenient living in a master planned community only metres from all the amenities and transport you'd expect.

Features include:

- Carpeted open plan living/dining with reverse cycle air conditioning
- Filled with natural light from the floor to ceiling windows
- 2 large balconies, large internal laundry with omega dryer
- Entertainers gas kitchen with Caesar-stone island bench top
- Soft close kitchen draws and cupboards, stainless steel



morton.com.au

View



As advertised or by appointment

Agents

Amy Torbarina

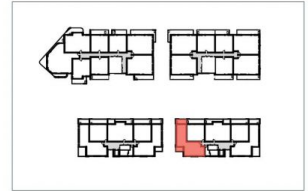
 0438 977 172
 amy@morton.com.au

Anthony Fleming

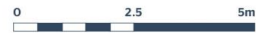
 0437 929 484
 anthonyf@morton.com.au



Apartment D405 2 Bed



Internal 80 m²
External 14 m²
Total 94 m²



THORNTON
ThorntonCentral.com.au

Disclaimer: This floor plan has been prepared for marketing purposes only. All descriptions, dimensions, depictions and other details in this floor plan (together, the "Information") may not be to scale. The vendor reserves the right to vary or amend the information without notice. The information may vary from the actual dimensions, layout and characteristics of the property as built. No third party has any authority whatsoever, either expressly or impliedly, to make or give any representation or warranty or to bind the vendor in connection with the information or the property.
Date issued: 21/02/2014 Version: 01