



# morton.

**Jordan Springs** D402/76-94 Lakeside Parade

🛏 2 🚿 2 🚗 1

Jordan Springs' newest residential project will soon be here with the exclusive Kala boutique development of 41 luxurious home-like apartments. This architect-created community, is destined to set new standards in the area for design quality and style featuring generous interior proportions with high-end inclusions and tranquil outlooks over the lake and national park. A new display suite is now open exclusively to our VIP clients for a first-look before general release to the public 9 July 2021.

- Choose from a selection of 1,2 or 3 bed layouts from \$440,000
- A cutting-edge design featuring high quality fittings throughout
- Light and breezy open plan living spaces with good air cross-flow and engineered timber floorboards
- Private outdoor terraces that capture outlooks over the area
- Designer stone kitchens fitted with high-end appliances
- Air-con to living and master bedroom, ceiling fans to other bedroom(s)

**morton.com.au**

## View

As advertised or by appointment

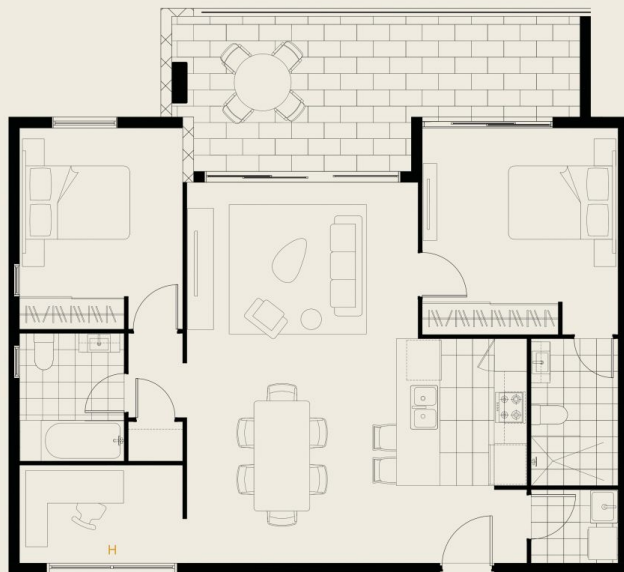
## Agents

### David Lipman

📞 0409 663 535  
✉ david@morton.com.au

### Mitchell Norman

📞 0409 375 390  
✉ mitchell@morton.com.au



0m 1 2 3 4 5

ABBREVIATIONS  
H Highlight window (1800mm sill)

DISCLAIMER: Please note that this Level plan was produced prior to construction. The information herein is believed to be correct but is not guaranteed. Changes may be made during construction and dimensions, areas, fittings and specification are subject to change without notice in accordance with the provisions of the contract for sale. The furniture and furnishings depicted are not included with any sale and purchasers must refer to the contract for sale of the list of inclusions. The position of the furniture and furnishings should not be taken to be indicative of final positions of power points, TV connection points and the like. Prospective purchasers must rely on their own enquiries. All graphics including tile layout, balustrades and the like are indicative only. Bulkheads for services are not depicted. All areas sizes indicated are approximate only and are subject to final survey.

# KALA

JORDAN SPRINGS

## Dilkara

D202 D302 D402

2 2 1

Internal	83m <sup>2</sup>
External	17m <sup>2</sup>
<b>Total</b>	<b>100m<sup>2</sup></b>



Lake  
Lakeside Parade  
National Park



Call 1300 56 41 41  
[kalajordansprings.com.au](http://kalajordansprings.com.au)  
76 Lakeside Parade, Jordan Springs, NSW

Proudly developed & built by  
**coplex**

SNA31