



morton.

Penrith 201/101B Lord Sheffield Circuit

 2  2  1

With respect to the latest government's COVID-19 restrictions we will be conducting open homes and private appointments with mandatory face masks, sanitisation, QR code check ins, and 1 person per 4sqm. Please submit an enquiry or contact the agent to be kept up to date with inspection times and register your attendance for viewings.

Located next to Penrith train station and across the rail line to Westfield, this 100 sqm two-bedroom unfurnished apartment in the new Thornton development, offers convenient living in a master-planned community only metres from all the amenities and transport you'd expect.

Features include:

- Carpeted open plan living/dining with reverse cycle A/C
- 2 x balconies north & south facing with courtyard lookout
- LED ceiling downlights, Large internal laundry with dryer
- Entertainers gas kitchen w Caesar-stone island benchtop
- Soft-close draws & cupboards, stainless steel appliances
- NBN ready, data/TV points in the living and bedroom



morton.com.au

View



As advertised or by appointment

Agents

Amy Torbarina

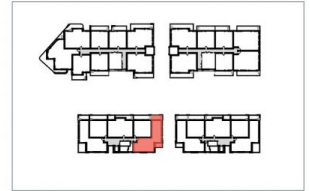
 0438 977 172
 amy@morton.com.au

Anthony Fleming

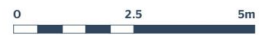
 0437 929 484
 anthonyf@morton.com.au



Apartment B201 2 Bed



Internal 80 m²
External 14 m²
Total 94 m²



THORNTON
ThorntonCentral.com.au

Disclaimer: This floor plan has been prepared for marketing purposes only. All descriptions, dimensions, depictions and other details in this floor plan (together, the "Information") may not be to scale. The vendor reserves the right to vary or amend the information without notice. The information may vary from the actual dimensions, layout, and characteristics of the property as built. No third party has any authority whatsoever, either expressly or impliedly, to make or give any representation or warranty or to bind the vendor in connection with the information or the property.

Date issued: 2/10/2014 Version: 01