



morton.

Alexandria 140A Lawrence Street

4 3 1

With respect to the latest government's COVID-19 restrictions we will be conducting open homes and private appointments with mandatory face masks, sanitisation, QR code check ins, and 1 person per 4sqm. Please submit an enquiry or contact the agent to be kept up to date with inspection times and register your attendance for viewings.

Welcome to this stylish two story residence built to provide comfort and elegance that is sure to impress anyone who is looking for a luxuriousness terrace living at a key location in the heart of Alexandria. Step inside this beautiful four bedroom home with a open living and dining areas, fold out doors to balcony and floor to ceiling windows along with quality finishes throughout the home. Located in a peaceful and a private area, this is the perfect location for a growing family or a couple looking for a spacious place to call home.

- Large bedrooms with built-in wardrobes
- Master bedroom with ensuite
- Private courtyard for entertaining

morton.com.au

View

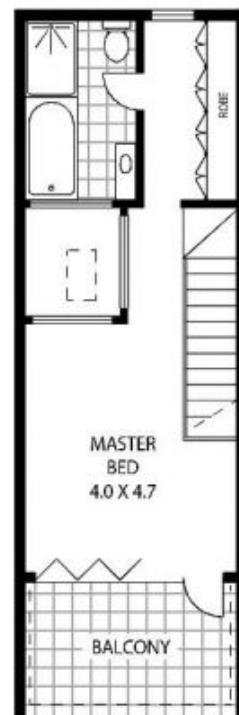
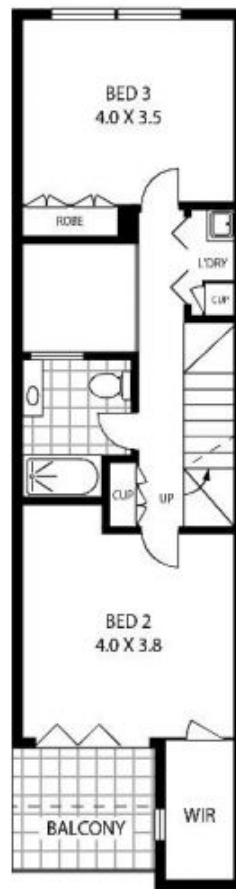
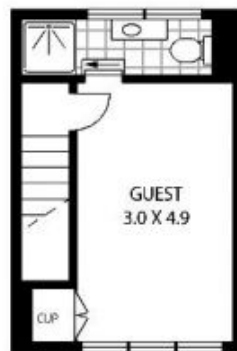
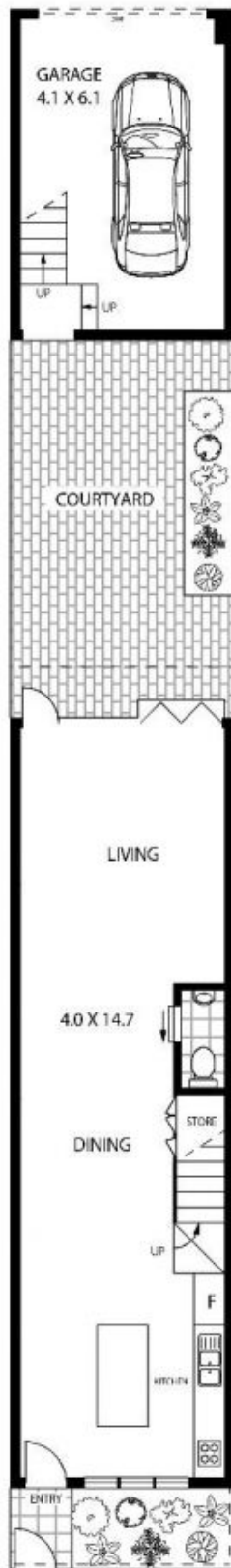
As advertised or by appointment

Agent

Kristian Karaspyros

0436 477 102

kristian.karaspyros@morton.com.au



138A LAWRENCE STREET

ALEXANDRIA

Floor Plan Disclaimer: Mind the Gap (mtg) floor plans / site plans are intended as an approximate guide only. No representations or warranties of any nature are given or intended and any person using this information other than as a guide should always rely on their own enquiries. Mind the Gap property marketing services / 1300 133 145 / Photography, Floor plans, Copywriting, Video, Design / www.mindthegap.com.au