



302/55 Lavender Street Milsons Point, NSW

 3

 2

 1

## Sensational views, size and urban luxury

Showcasing all the highlights of the ultimate apartment lifestyle with sensational views over the city and harbour, this superb residence takes executive living to new heights. It makes an instant impact with its spacious interior design that combines size, style, light and incredible panoramas to provide a superb home within Mirvac's highly sought-after Latitude complex, and on the doorstep of North Sydney's vibrant business, restaurant and entertainment precinct.

- Dramatic views over Lavender Bay and the Harbour Bridge
- A supremely spacious layout with a flowing single-level design
- Generous living spaces with separate formal and casual areas
- A large entertainment balcony and beautiful city panoramas
- Stylish Miele-appointed kitchen featuring a breakfast island

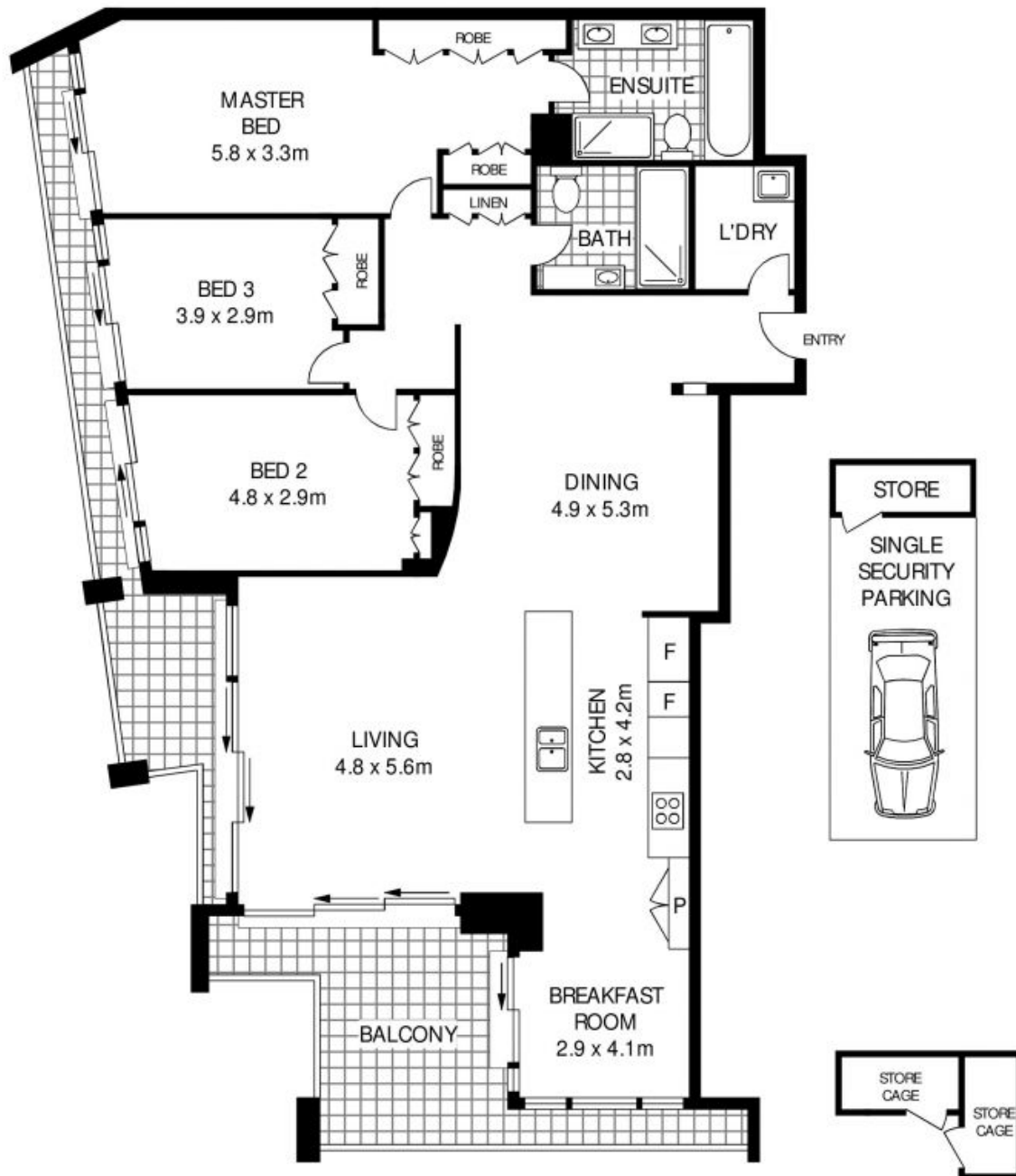
The real highlight of this superb property is its highly convenient location that's within

**Inspect:**  
**Auction:** 2021-12-07  
**Details:** 19:15:00

**Council Rates:** \$291.90 p/q  
**Water Rates:** \$150.90 p/q

**Ettiene West**  
 0410 593 749

**Konstantin Melnikov**  
 0421 540 424



302/55 Lavender Street

Milsons Point, NSW

302/55 LAVENDER STREET

MILSONS POINT