



111/148 Goulburn Street Surry Hills, NSW

 1  1  1

Warehouse style living in prime Surry Hills location

Perfectly situated in the heart of Surry Hills encircled by trendy cafes, Sydney's best shopping and just metres walk to Oxford Street, Hyde Park and Museum train station, sits this immaculately presented one-bedroom apartment.

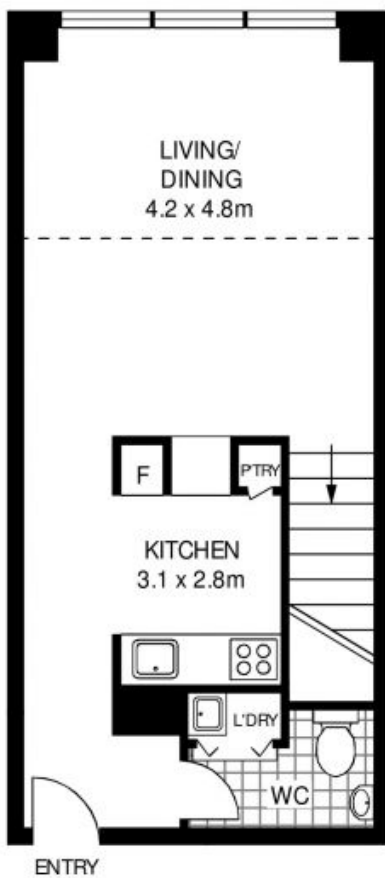
A Phillippe Starck design offering the ultimate Sydney lifestyle, you'll be captivated by this home's unique combination of modern luxury appointments and classic charm. The practical layout, unique offering and abundance of space really is just the beginning.

- Unique interiors with exposed wooden beams and original brick stock
- 5.35m soaring ceiling heights, originally constructed in 1915

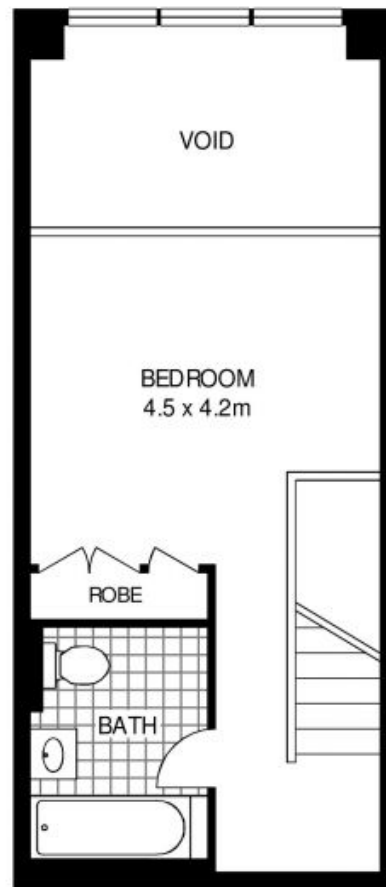
Council Rates: \$245.76 p/q
Water Rates: \$157.31 p/q

Ettiene West
 0410 593 749

Emma Ryan
 0409 325 440



LEVEL 1



LEVEL 2

111/148 Goulburn Street

Surry Hills, NSW

111/148 GOULBURN STREET

SURRY HILLS