

**morton.**

**Penrith** 308/81A Lord Sheffield Circuit

 2  2  1

With respect to the latest government's COVID-19 restrictions we will be conducting open homes and private appointments with mandatory face masks, sanitisation, QR code check ins, and 1 person per 4sqm. Please submit an enquiry or contact the agent to be kept up to date with inspection times and register your attendance for viewings.

A lifestyle of the utmost convenience begins with this modern security apartment presenting astute starters and investors with a superb entry into the master-planned Thornton Estate community. Smartly appointed to give it a designer look and feel, it offers a fresh and bright living space with a low maintenance layout good quality finishes and an elevated aspect over the complex's landscaped gardens.

- A bright north-easterly aspect with a pleasant garden outlook
- Open plan layout featuring timber floorboards and study area
- A private and sunlit balcony that flows off the living space
- Air-conditioned bedrooms are at opposite ends of the floorplan

**morton.com.au**

**View**

As advertised or by appointment

**Agent**

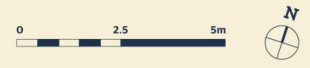
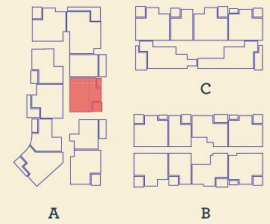
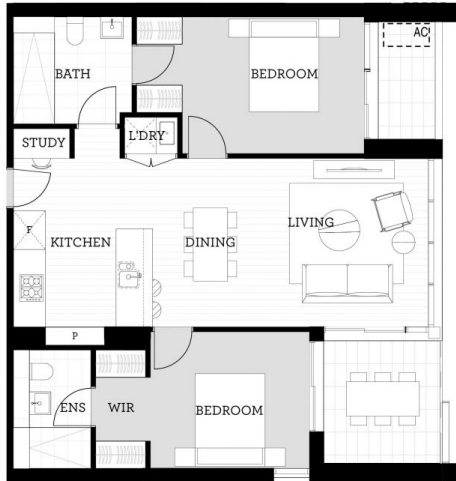
**Amy Torbarina**

 0438 977 172

 amy@morton.com.au

*Apartment*

2 BED- A 308



Internal	76 m <sup>2</sup>
External	8 m <sup>2</sup>
<b>Total</b>	<b>84 m<sup>2</sup></b>

DATE ISSUED 27/07/2015  
VERSION 02

Developed by St Hilliers FIRST POINT PROJECTS | Sales by LINK Home Land Direct [thorntoncentral.com.au](http://thorntoncentral.com.au)

**Disclaimer:** This floor plan has been prepared for marketing purposes only. All descriptions, dimensions, depictions and other details in this floor plan together, the "Information" may not be to scale. The vendor reserves the right to vary or amend the Information without notice. The Information may vary from the actual dimensions, layout and characteristics of the property as built. No third party has any authority whatsoever, either expressly or impliedly, to make or give any representation or warranty or to bind the vendor in connection with the information or the property.

**THORNTON**