



# morton.

**Zetland** 2/1 Lamond Lane

 2  1  2

Located in the desirable Emerald Park development, this 2 bedroom split-level apartment offers a modern life style and comes equipped with floor to ceiling glass windows allowing a abundance of natural light leading onto a large enclosed courtyard.

The property is situated in a quiet street, directly across the road from Mary O'Brien Reserve and within short walking distance to East Village and public transport.

- 2 Generous Bedrooms
- Bathroom equipped with bath
- Generous size open plan living and dining area
- Stainless steel appliances and gas cook top with wok burners
- Caesar stone bench top
- Courtyard great for entertaining
- Outdoor Swimming Pool and Spa
- Secure underground car space

### View



As advertised or by appointment

### Agents

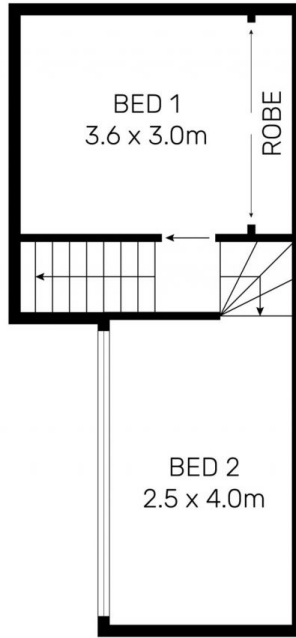
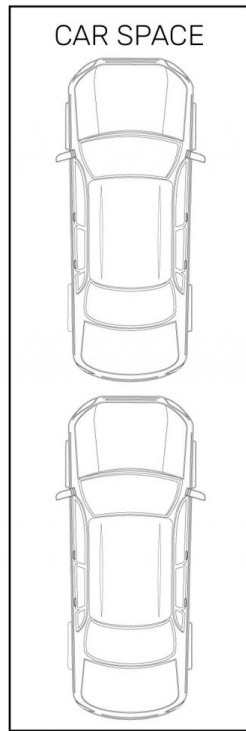
#### Calvin Chan

 0406 888 028  
 calvin@morton.com.au

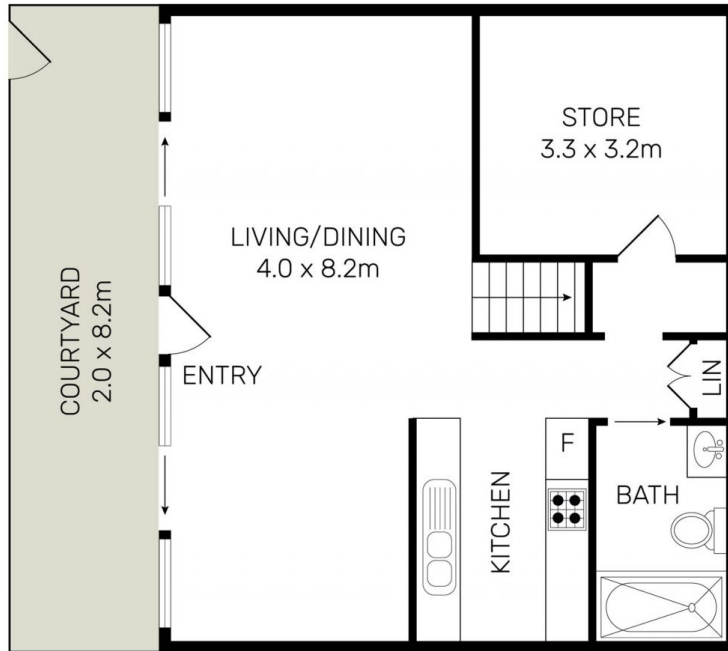
#### Jackson Figueiras

 0448 764 345  
 jackson@morton.com.au

[morton.com.au](https://morton.com.au)



LEVEL 1



GROUND LEVEL



All information contained herein is gathered from all sources we believe to be reliable. However we cannot guarantee its accuracy and interested parties should rely on their own enquiries.



CampaignPROS

morton.

Zetland 2/1 Lamond Lane