

morton.

Darlinghurst Level 10/220 Goulburn Street

 1  1  1

Beautifully presented apartment ideally suited to professionals seeking convenience to the Sydney CBD. Located east of Hyde Park this building is an easy stroll to the majority of CBD destinations & Sydney's vibrant city fringe.

- Open plan living extends to a balcony, ideal for taking in the harbour glimpses
- Kitchen boasts superb functionality, mirrored splashback, and sleek cabinetry
- Queen sized bedroom with built-in robe and filled with natural light
- Chic fully tiled bathroom includes laundry facility
- High ceilings and reverse cycle air conditioning
- Security car space and storage locker with lift access to the apartment
- Crisp white interior scheme complements the warmth of timber look floors
- Communal rooftop BBQ area enjoys sweeping views of the city and harbour as well as heated indoor pool/spa

View

As advertised or by appointment

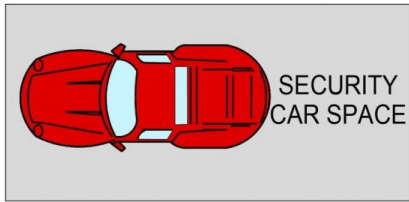
Agent

Sarah Fowell



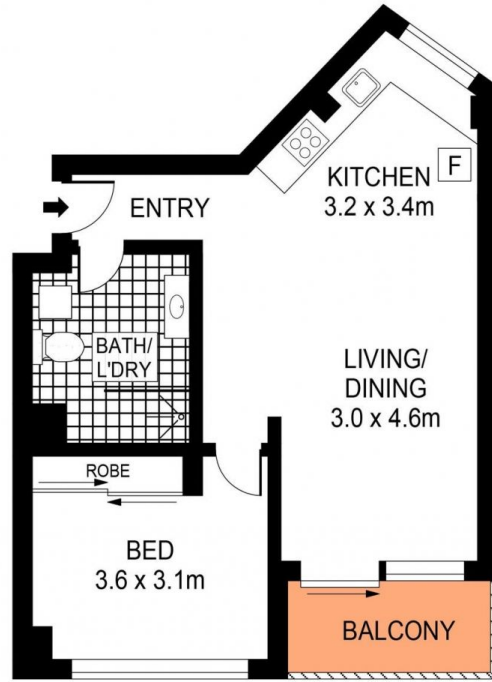
 sarah@morton.com.au

morton.com.au



LEVEL ONE

0 1 2 3 4



LEVEL TEN

