



morton.

Woolloomooloo 103/6 Cowper Wharf Roadway

2
 2
 1

A rare offering in the Finger Wharf that few residences can hope to match, this beautifully presented apartment claims a prime North / West corner waterfront position. A generous open living area flows effortlessly onto a oversized 43sqm timber decked terrace, showcasing sweeping views across the marina toward the Botanic Gardens and skyline. A short walk to the CBD, Andrew 'Boy' Charlton pool, galleries and some of Sydney's best attractions.

- large living area, 2 bedrooms, 2 bathrooms,
- Stone finished kitchen has gas appliances
- Large bedrooms both include built-in robes
- Master has full ensuite, access to terrace
- Terrace has gate access to the boardwalk
- Internal laundry, ducted air conditioning
- Intercom, Wharf parking, 24 hr security
- Optional pool and gym membership

View

As advertised or by appointment

Agents

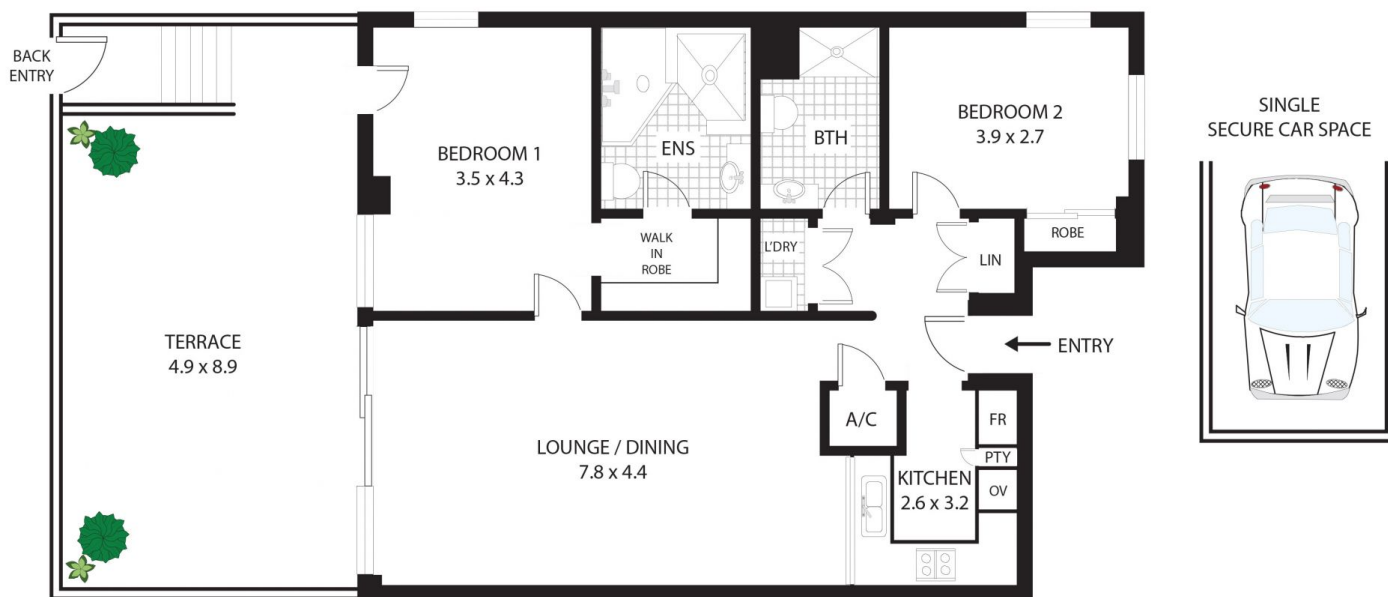
Noel Jenkins

0410 593 694
 noel@morton.com.au

Amanda Clement

0448 016 404
 amanda.clement@morton.com.au

morton.com.au



103/6 Cowper Wharf Rd, Woolloomooloo

All measurements are approximate only. Plan is provided as an indication of layout

