



morton.

Woolloomooloo 542A/6 Cowper Wharf Roadway

 2  2

This luxurious waterfront unfurnished apartment is located on the eastern side of Woolloomooloo's Finger Wharf. This property makes the most of the stunning views over Potts Point and Garden Island.

- Invitingly well proportioned combined lounge and dining
- Generous master has an ensuite, walk-in robe/dressing room
- Sleek kitchen with granite benches and gas appliances
- Vaulted ceilings, reverse cycle air conditioning
- Oversized second room on lower level, 2nd bathroom and internal laundry
- 24 hour on site security

View

As advertised or by appointment

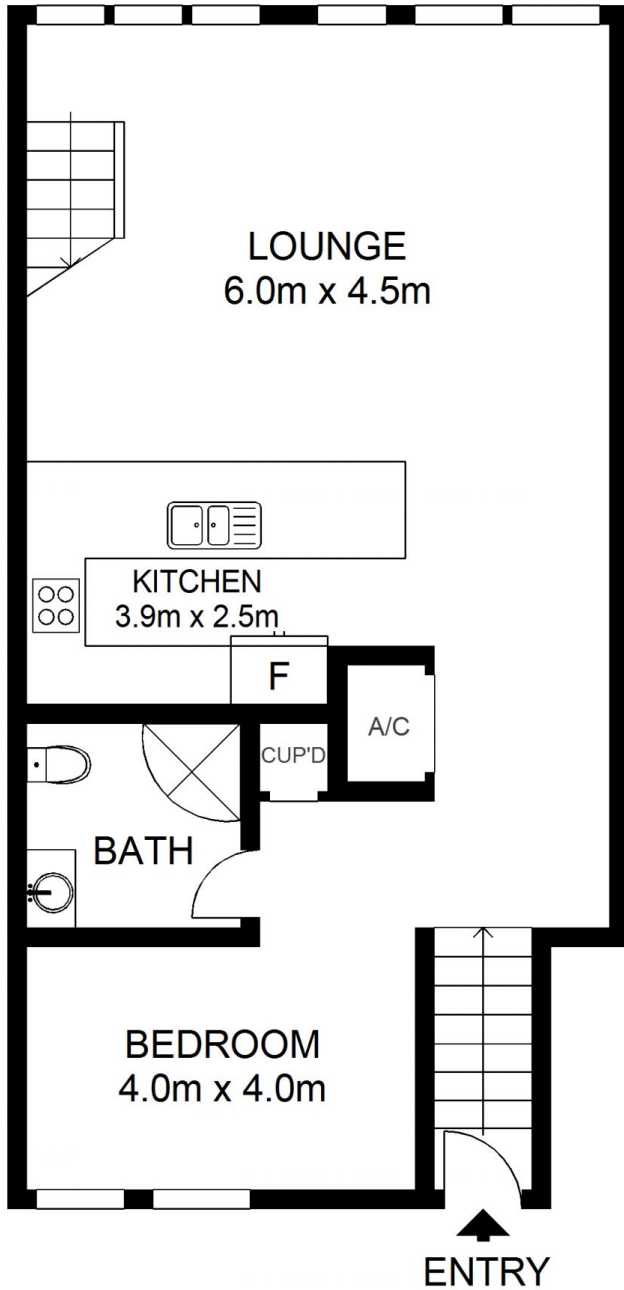
Agent

Christian Postiglione

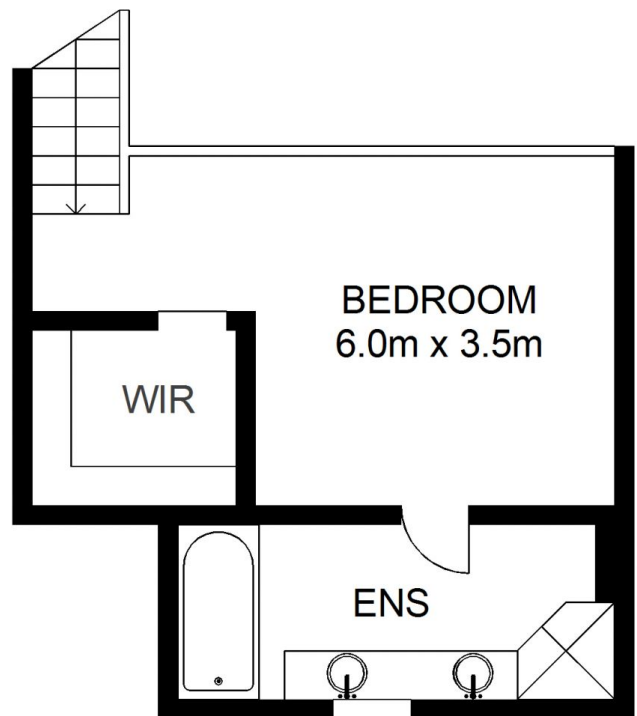
 0400 074 525

 christian.postiglione@morton.com.au

morton.com.au



ENTRY LEVEL



UPPER LEVEL

morton.

542A/6 Cowper Wharf Road, WOOLLOOMOOLOO

Not to scale • All measurements are approximate • Drawn for marketing purposes only • Floorplan by © Industrie Media

