



# morton.

**Darlinghurst** 87/6-14 Oxford Street

🛏 2 🚿 1 🚗 1

Set on the eighth level of the highly sought-after 'Parkridge Apartments', this superb two-bedroom apartment provides an unmatched culmination of style & convenience. With sweeping north-east views and light-filled interiors, this residence is designed to create an idyllic lifestyle opportunity in the heart of Oxford Street.

- Generous floor plan with a bright open living and dining space
- Set on the quieter north side of the building
- An elevated position that captures views over harbour and the city
- Large balcony that flows easily off the living space
- Air conditioning and internal laundry room
- Secure undercover parking, lift access and on-site building manager
- Outdoor swimming pool & sitting area, pet friendly complex

### View

As advertised or by appointment

### Agents

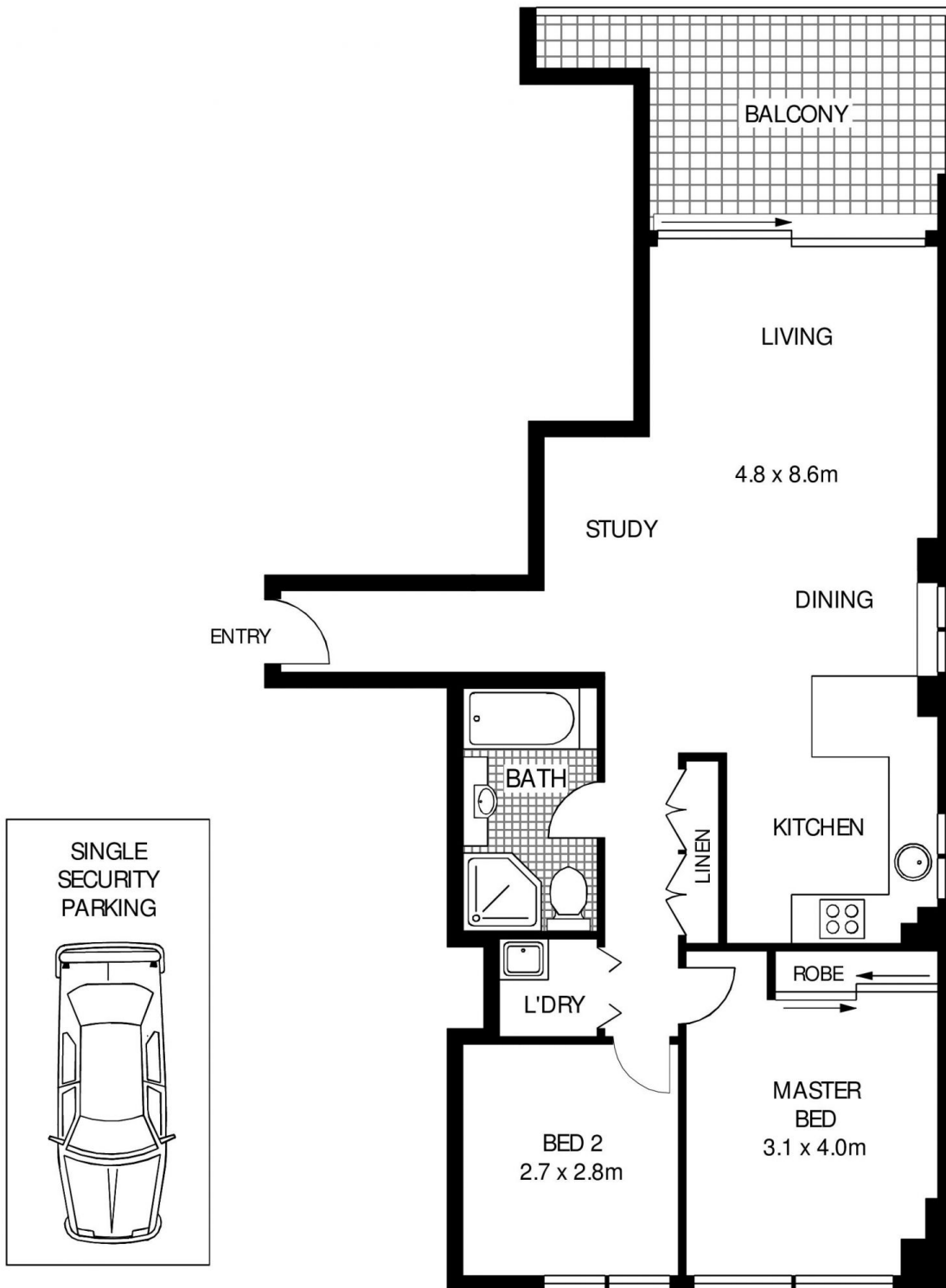
#### Ettiene West

📞 0410 593 749  
✉ ettiene@morton.com.au

#### Emma Ryan

📞 0409 325 440  
✉ emmar@morton.com.au

[morton.com.au](https://morton.com.au)



**LEVEL 8**



INTERNAL AREA :- 69 SQM  
 EXTERNAL AREA :- 24 SQM  
 TOTAL :- 93 SQM

**87/6-14 OXFORD STREET**

**SYDNEY**

SCAPE Floor Planning Disclaimer: This floor plan is conceptual only. It is provided for illustrative purposes only and should not be relied upon. We make no guarantee as to the correctness of this plan. All interested parties should make and rely on their own enquiries in determining the accuracy of the information contained in this floor plan.