



morton.

Pyrmont 603/50 Murray Street

 2  2  1

There are not many residences that can create such an immediate impression of inner-city style, size and quality design. Gazing due east with jaw dropping views over Sydney's dazzling skyline, this spacious apartment provides a luxury home with generous interiors, high-end finishes and over 100 sqm of in/outdoor living space. It represents a rare opportunity to secure a stunning executive retreat and become a part of the privileged 'One Darling Harbour' community.



- A flowing open plan design leading onto terrace
- An extra-large entertainment terrace overlooking the city
- Chic kitchen with designer fittings and ample storage
- Two double-sized bedrooms both have access to the terrace
- Master suite with built-in and full bath ensuite
- Security car space, storage cage and intercom
- Rooftop pool, spa, gym, sundeck with sweeping harbour views
- Property available on a furnished basis

View



As advertised or by appointment

Agents

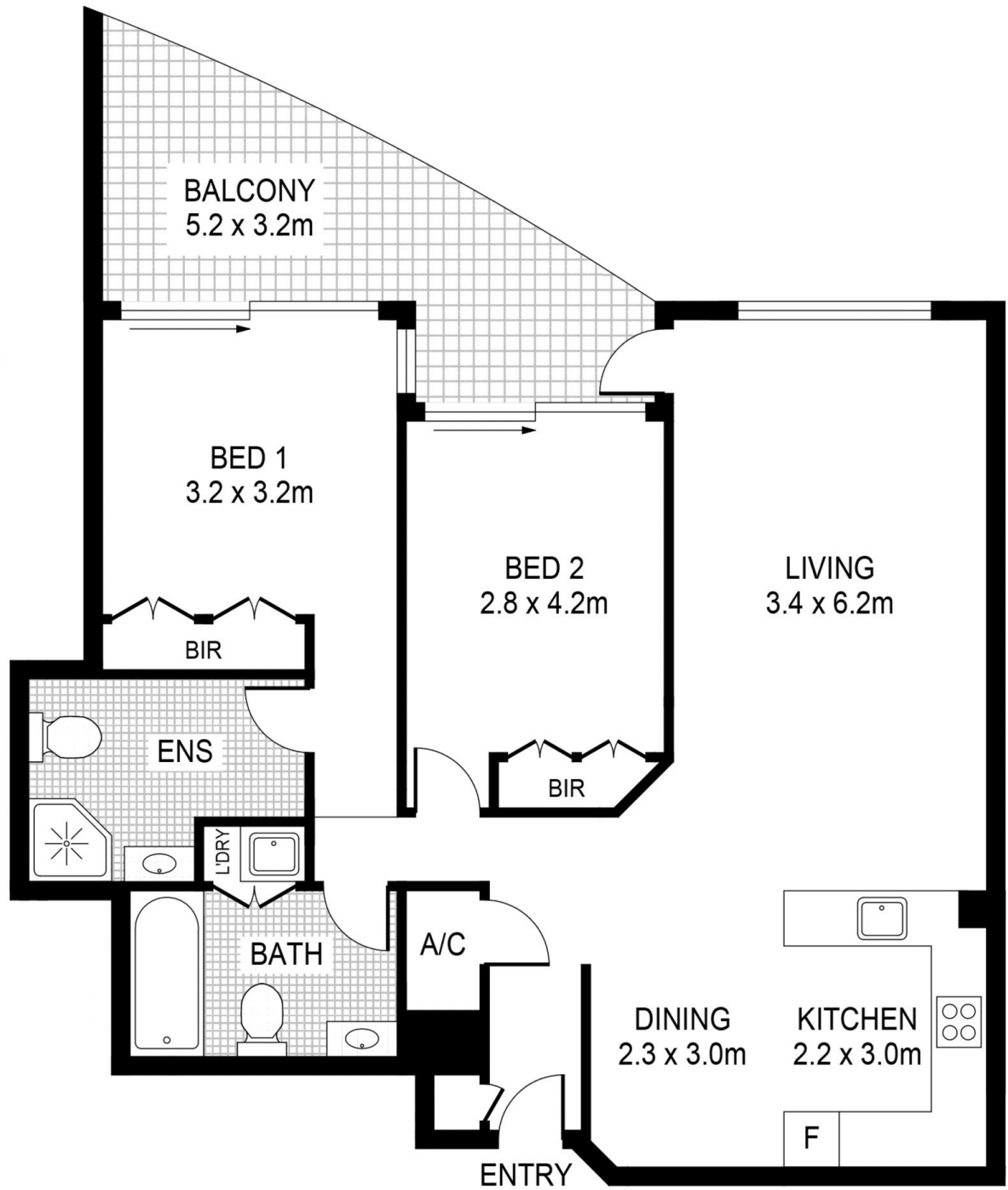
Nicole Beckett

 0409 896 152
 nicole@morton.com.au

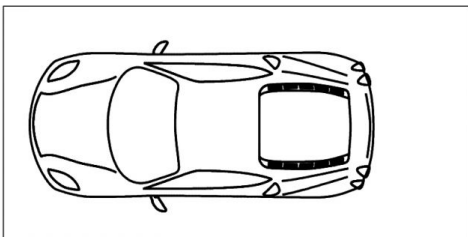
Naomie Texier

 0439 247 710
 naomie@morton.com.au

morton.com.au



CAR SPACE



STORAGE
CAGE

PLANS SHOWN ONLY INDICATIVE OF LAYOUT. DIMENSIONS ARE APPROXIMATE.



PYRMONT 603/50 Murray Street

morton.