



morton.

Pyrmont 59/1-27 Murray Street

 3  3  2

Delivering an exceptional and rare 208sqm of indoor/outdoor space on title, this luxury 3 bedroom, 3 bathroom residence showcases a single-level designer layout, defined by a stunning 50 square metre entertainer's terrace offering a green sanctuary right in the heart of Pyrmont/Darling Harbour. Set in Mirvac's prestigious Gateway complex, on the quieter side of the building, this is a home of outstanding quality and generous proportions, fully embracing its tranquil outlook, with terrace access from every room through floor-to-ceiling glass.

- Rarely-available floorplan in prestigious Mirvac 'Gateway' building
- Quietly located with walk-everywhere convenience
- Tranquil 50 square metre entertainer's terrace with BBQ
- Luxury kitchen with granite benchtops, gas cooktop & stainless appliances
- King-size Master wing, expansive built-in robes, marble en-suite with bath
- Two additional double bedrooms, built-in robes access courtyard

morton.com.au

View

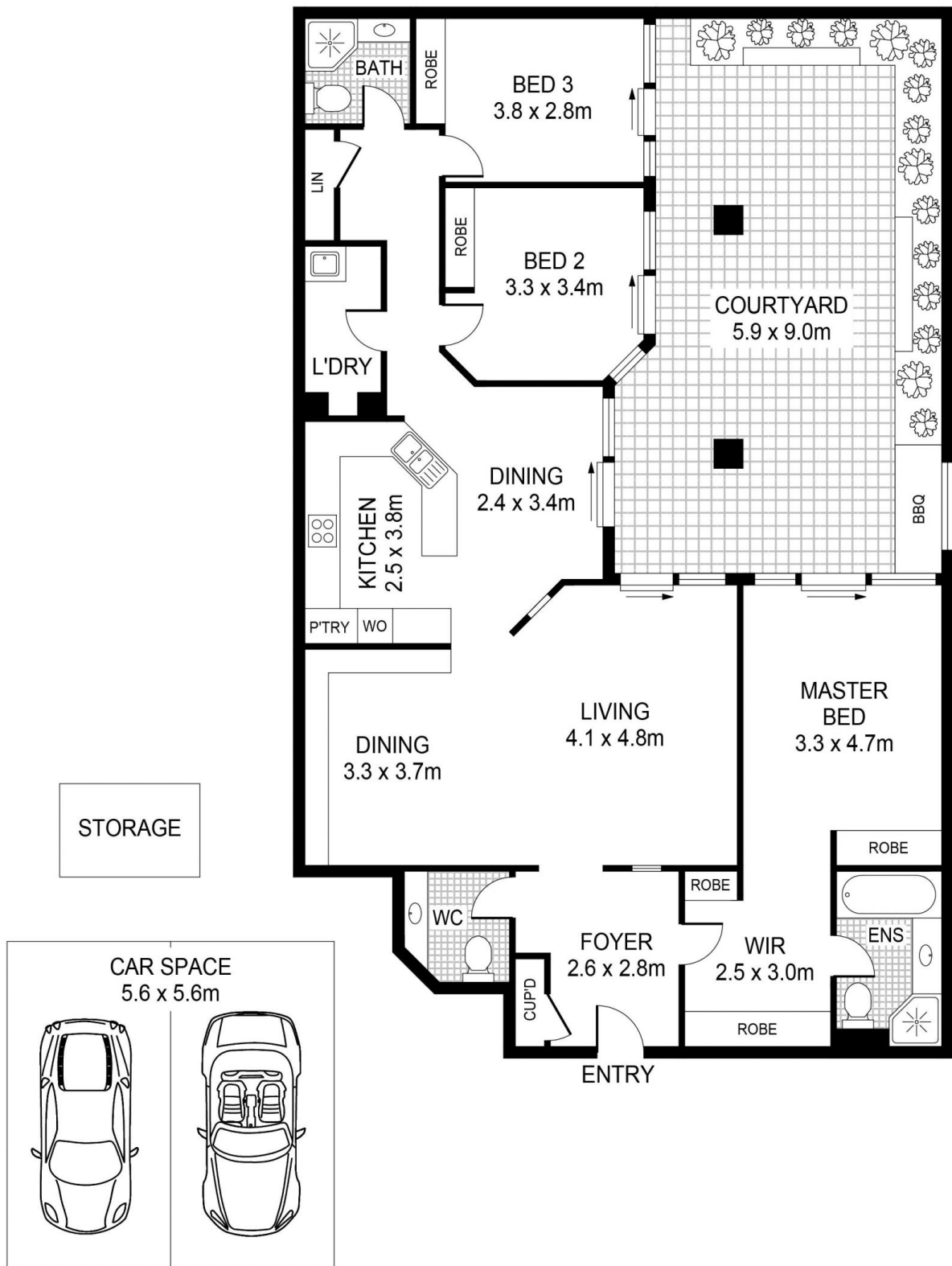
As advertised or by appointment

Agent

James Crow

 0410 593 057

 james@morton.com.au



59/1-27 MURRAY STREET, PYRMONT