



morton.

Sydney 701/281 Elizabeth Street

 2  2  1

Ideally set in the highly sought after 'Regency Hyde Park', this two bedroom apartment presents a spectacular offering of executive city living at its finest. Offering an enviable North-East aspect capturing district views and well-suited to both the investor or owner occupier alike, this residence is an excellent opportunity to experience sophisticated living in one of Sydney's most desirable locations.



- Well appointed, generous floorplan focused on capturing park views
- Two spacious bedrooms both with built-in robes
- North-facing master bedroom with views & large ensuite
- 24 hour concierge service and full time building manager
- Secure car space and visitor parking
- Wide range of facilities including a gym, heated indoor pool, sauna & spa

View



As advertised or by appointment

Agents

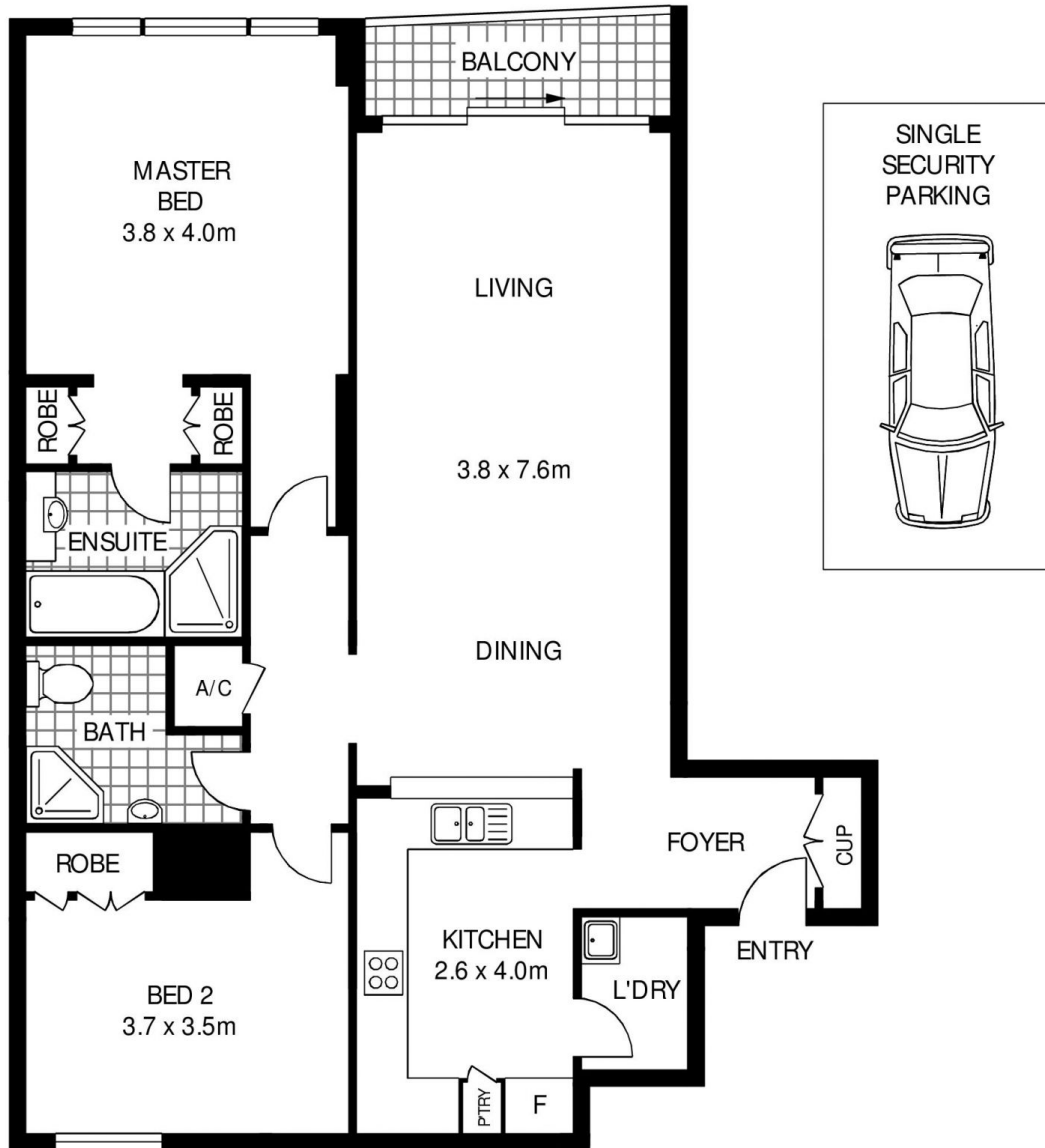
Ettiene West

 0410 593 749
 ettiene@morton.com.au

Emma Ryan

 0409 325 440
 emmar@morton.com.au

morton.com.au



LEVEL 7



701/281 ELIZABETH STREET

SYDNEY

SCAPE Floor Planning Disclaimer: This floor plan is conceptual only. It is provided for illustrative purposes only and should not be relied upon. We make no guarantee as to the correctness of this plan. All interested parties should make and rely on their own enquiries in determining the accuracy of the information contained in this floor plan.