



morton.

North Sydney 509/245 Pacific Highway

🛏 2 🚿 2 🚗 1

Flooded with natural light and set high above the streets of North Sydney, this spacious apartment provides a quiet and contemporary haven. An expansive timber deck, accessible from both the living area and the master bedroom, makes the most of the spectacular district and city views. The stacking glass sliding doors that open onto the deck allow for maximum air flow and bring the outside in.

- Free-flowing lounge and kitchen area with large windows take advantage of surrounding views
- Contemporary gas kitchen with dishwasher and plenty of storage
- Master bedroom with built in robe, ensuite and separate access to the deck
- Second bedroom with large built-in robe
- Contemporary bathrooms with floor to ceiling tiles and ample storage
- European laundry with dryer; ducted air conditioning throughout
- Private residents' rooftop terrace with stunning harbour

View

As advertised or by appointment

Agents

Konstantin Melnikov

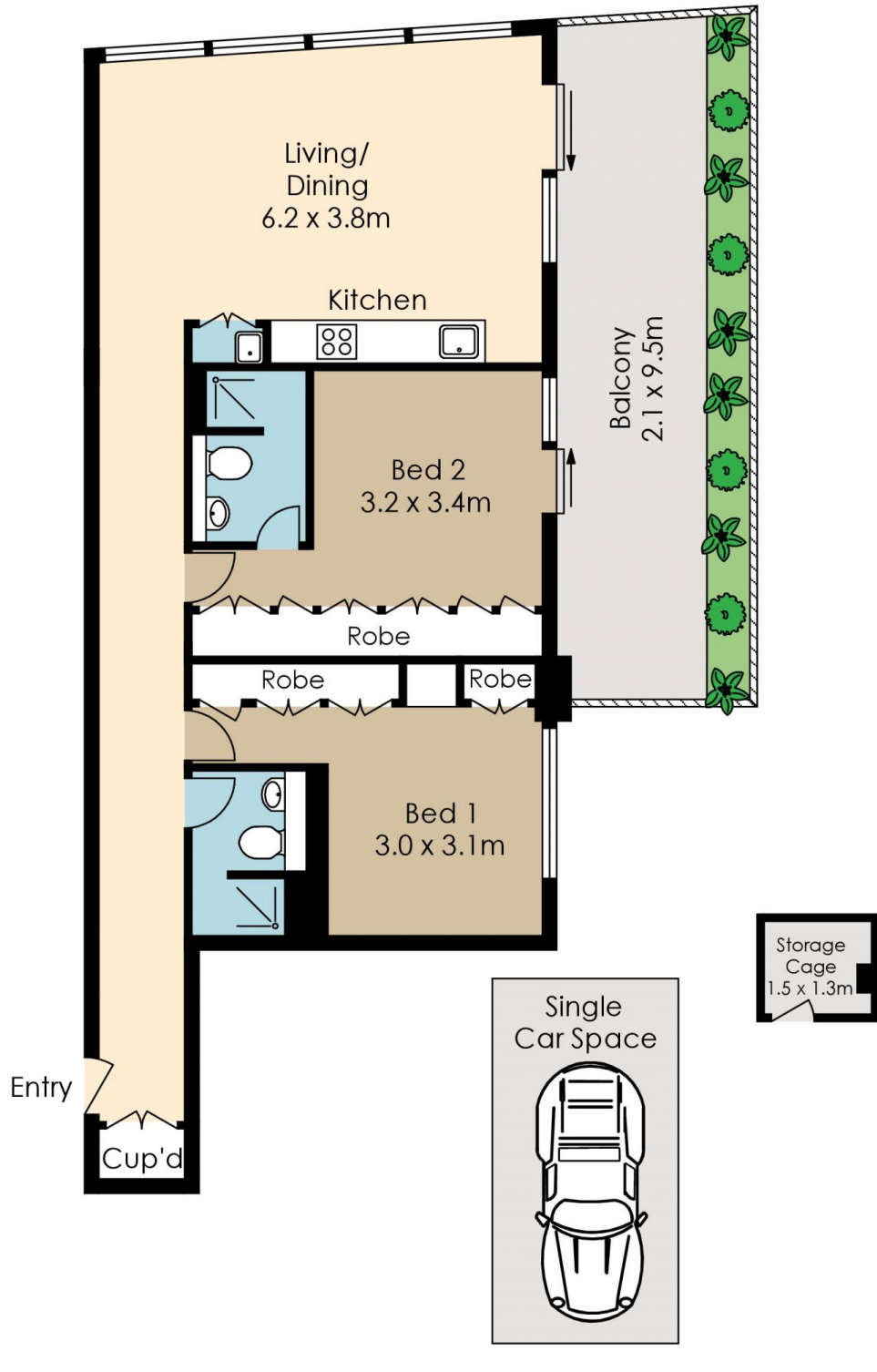
📞 0421 540 424
✉ konstantin@morton.com.au

Ferenc Goemoeri

📞 0447 025 423
✉ ferenc@morton.com.au

morton.com.au

509/245 Pacific Highway, North Sydney



The information above is provided in good faith and has been provide to us from a variety of sources. We have not verified whether the information is accurate and do not have any belief one way or other in its accuracy. We do not accept any responsibility to any person for its accuracy and do no more than pass it on. All interested parties should rely on their own inquiries in order to determine whether or not this information is in fact accurate.