



morton.

Pyrmont G2/117 Murray Street



This prime inner-urban address will be a major drawcard for buyers looking for a private courtyard retreat within a stroll to Sydney CBD. Positioned within the quality Phoenix community in the vibrant Darling Harbour precinct, it delivers a smart low-maintenance property with freshly presented interiors, good proportions and a private outdoor space for entertaining.

- Generous layout with an air-conditioned open design
- Separate dining nook or office space off the living area
- Private courtyard and verdant garden with rear lane access
- Large double bedroom with built-in and courtyard access
- Well-appointed gas kitchen and breakfast bar seating
- Intercom access plus a single security car space on title
- Great-sized bathroom complete with full bath and shower
- Full laundry, internal storage and building security

View

As advertised or by appointment

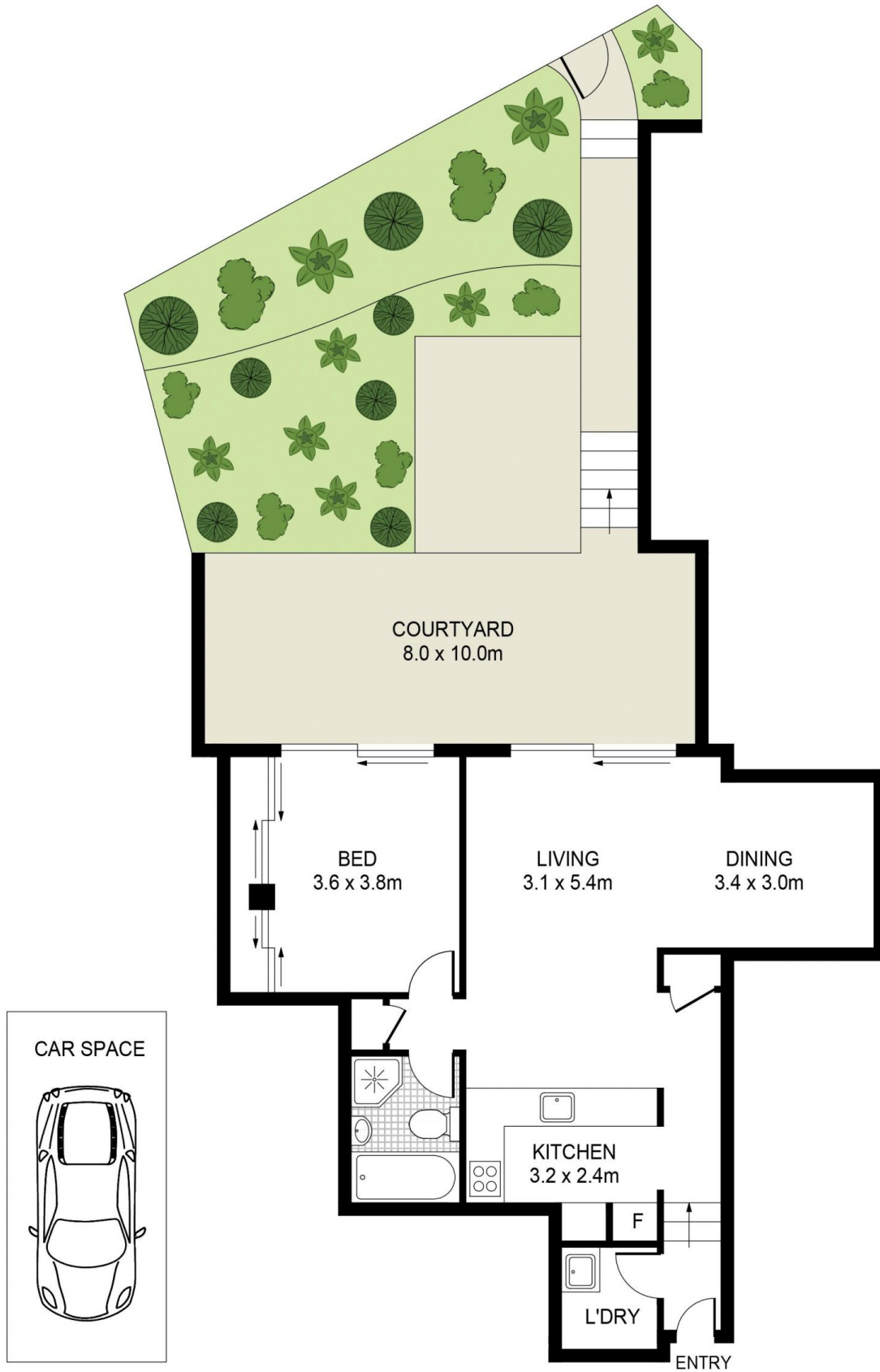
Agent

James Crow

📞 0410 593 057

✉️ james@morton.com.au

morton.com.au



PLANS SHOWN ONLY INDICATIVE OF LAYOUT. DIMENSIONS ARE APPROXIMATE.

